

INSTRUCTIONAL OUTPUT
AND FACULTY SALARY COSTS
OF THE STATE-RELATED
AND STATE-OWNED UNIVERSITIES

Analysis of 1999-00 Data
Reported Under 1999 Appropriations Acts
and Public School Code

Staff Report
General Assembly of the Commonwealth of Pennsylvania
JOINT STATE GOVERNMENT COMMISSION
108 Finance Building
Harrisburg, Pennsylvania 17120
February 2001

The release of this report should not be construed as an indication that the members of the Executive Committee of the Joint State Government Commission endorse all of the report's findings, recommendations or conclusions.

**JOINT STATE GOVERNMENT COMMISSION
ROOM 108 FINANCE BUILDING
HARRISBURG PA 17120-0018**

**717-787-4397
FAX 717-787-7020**

E-mail: jntst02@legis.state.pa.us

The Joint State Government Commission was created by act of July 1, 1937 (P.L.2460, No.459) as amended, as a continuing agency for the development of facts and recommendations on all phases of government for the use of the General Assembly.

JOINT STATE GOVERNMENT COMMISSION, 2001

OFFICERS

Roger A. Madigan, Chairman

Jeffrey W. Coy, Treasurer

EXECUTIVE COMMITTEE

Senate Members

Robert C. Jubelirer
President Pro Tempore

David J. Brightbill
Majority Leader

Robert J. Mellow
Minority Leader

Jeffrey E. Piccola
Majority Whip

Michael A. O'Pake
Minority Whip

Noah W. Wenger
Chairman, Majority Caucus

Jack Wagner
Chairman, Minority Caucus

House Members

Matthew J. Ryan
Speaker

John M. Perzel
Majority Leader

H. William DeWeese
Minority Leader

Samuel H. Smith
Majority Whip

Michael R. Veon
Minority Whip

David G. Argall
Chairman, Majority Caucus

Mark B. Cohen
Chairman, Minority Caucus

MEMBER EX-OFFICIO

Roger A. Madigan, Commission Chairman

David L. Hostetter, Executive Director

STATE-RELATED AND STATE-OWNED UNIVERSITIES
AND BRANCH CAMPUSES
(WITH COUNTIES)

State-Related Universities

Lincoln (Chester)

Penn State University Park (Centre)
Commonwealth College
Beaver (Beaver)
Delaware (Delaware)
DuBois (Clearfield)
Fayette (Fayette)
Hazleton (Luzerne)
Mont Alto (Franklin)
McKeesport (Allegheny)
New Kensington (Westmoreland)
Shenango (Mercer)
Wilkes-Barre (Luzerne)
Worthington Scranton (Lackawanna)
York (York)

Other Colleges
Abington (Montgomery)
Altoona (Blair)
Berks (Berks)
Erie (Erie)
Great Valley (Chester)
Harrisburg (Dauphin)
Lehigh Valley (Lehigh)
Schuylkill (Schuylkill)
Milton S. Hershey Medical Center (Dauphin)*
Pennsylvania College of Technology (Lycoming)**

Pittsburgh (Allegheny)*
Bradford Campus (McKean)
Greensburg Campus (Westmoreland)
Johnstown Campus (Cambria)
Titusville Campus (Crawford)

Temple (Philadelphia)*
Ambler Campus (Montgomery)
Harrisburg Center (Dauphin)

State-Owned Universities

Bloomsburg (Columbia)

California (Washington)

Cheyney (Delaware)

Clarion (Clarion)
Venango Campus (Venango)

East Stroudsburg (Monroe)

Edinboro (Erie)

Indiana (Indiana)
Armstrong Campus (Armstrong)
Punxsutawney Campus (Jefferson)

Kutztown (Berks)

Lock Haven (Clinton)
Clearfield Campus (Clearfield)

Mansfield (Tioga)

Millersville (Lancaster)

Shippensburg (Cumberland)

Slippery Rock (Butler)

West Chester (Chester)

*Medical School data not included in this report.
**Not included in this report.

FOREWORD

This 28th annual report summarizes the instructional outputs, instructional faculty salary costs, tuition, and Commonwealth instructional appropriations and student aid for Pennsylvania's State-related and State-owned universities--the Commonwealth's public universities.

The report is based primarily on data reported by Pennsylvania's public universities to the Pennsylvania General Assembly, as required by the annual appropriation acts for the State-related universities, and the Public School Code for the State-owned universities. These data include student credit hours and degrees, and faculty salaries and workweek activities. The report includes instructional faculty salaries, but does not include noninstructional faculty salaries. Therefore, ***average faculty salaries in the report cannot be compared to those reported in other places.*** In addition, since the university data do not include nonsalary expenditures, the report does not summarize total instructional costs for the universities. Data on tuition, Commonwealth instructional appropriations, and student aid from other sources supplement the university data.

Levels of data for 1999-00 and data trends for 1994-95 to 1999-00 are presented. ***Readers are cautioned to use the current historical tables for prior years' data, as some previous data have been revised in these tables.***

Student credit-hour and salary data are combined for the computation of a measure of cost efficiency: instructional faculty salary cost per full-time equivalent student. Tuition and instructional appropriation data are combined for the computation of a measure of cost sharing: the percentage of total instructional revenues covered by instructional appropriations.

This report is intended for use by a variety of persons or groups: by legislators for making appropriation decisions; by university administrators for evaluating policies related to faculty outputs, salaries and workloads; and by Pennsylvania citizens, for making informed judgments about the levels and shares of costs related to public higher education in the Commonwealth.

page vi blank



CONTENTS

STATE-RELATED AND STATE-OWNED UNIVERSITIES AND BRANCH CAMPUSES (WITH COUNTIES)	iv
FOREWORD.....	v
FULL- AND PART-TIME STUDENTS ENROLLED IN PUBLIC AND PRIVATE COLLEGES AND UNIVERSITIES IN PENNSYLVANIA, FALL 1999	xi
CHANGES IN FTE STUDENT ENROLLMENTS IN THE STATE-RELATED AND STATE-OWNED UNIVERSITIES, 1994-95 to 1990-00.....	xii
ESTIMATED ANNUAL COST SAVINGS FROM A DECREASE IN AVERAGE SALARY AND AN INCREASE IN AVERAGE CLASS SIZE FOR THE STATE-RELATED AND STATE-OWNED UNIVERSITIES, 1999-00.....	xiii
I. CURRENT-YEAR DATA	
TABLES	
1. Full-Time Equivalent Students by Academic Level.....	3
2. Full-Time Equivalent Students by Academic Division and Level.....	4
3A. Lincoln University - Number and Percentage Distribution of Full-Time Equivalent Students	5
3B. Pennsylvania State University - Number and Percentage Distribution of Full-Time Equivalent Students	6

3C.	University of Pittsburgh - Number and Percentage Distribution of Full-Time Equivalent Students	7
3D.	Temple University - Number and Percentage Distribution of Full-Time Equivalent Students	8
3E.	State-Owned Universities - Number and Percentage Distribution of Full-Time Equivalent Students	9
4.	Degrees Conferred	10
5.	Number and Workweeks of Full-Time Employed Faculty by Type of Activity.....	11
6.	Number and Average Instructional Salaries of Full-Time Equivalent Instructional Faculty and Percentage Distribution by Rank	12
7.	Average Instructional Faculty Salary Cost Per Full-Time Equivalent Student by Academic Division and Level	13
8A.	Lincoln University - Average Instructional Faculty Salary Cost per Full-Time Equivalent Student	14
8B.	Pennsylvania State University - Average Instructional Faculty Salary Cost per Full-Time Equivalent Student	15
8C.	University of Pittsburgh - Average Instructional Faculty Salary Cost per Full-Time Equivalent Student	16
8D.	Temple University - Average Instructional Faculty Salary Cost per Full-Time Equivalent Student	17
8E.	State-Owned Universities - Average Instructional Faculty Salary Cost per Full-Time Equivalent Student	18

9.	Average Class Sizes in Classroom Instruction by Academic Division and Level.....	19
10.	Academic Year Tuition and Required Fees for Full-Time Students by Academic Level and Residence	20
11.	Tuition and Fee Revenues Related to Full-Time Equivalent Students	21
12.	Commonwealth Instructional Appropriations Related to Full-Time Equivalent Students	22
13.	Tuition and Fee Revenues, Commonwealth Instructional Appropriations and Student Aid Related to Full-Time Equivalent Students	23

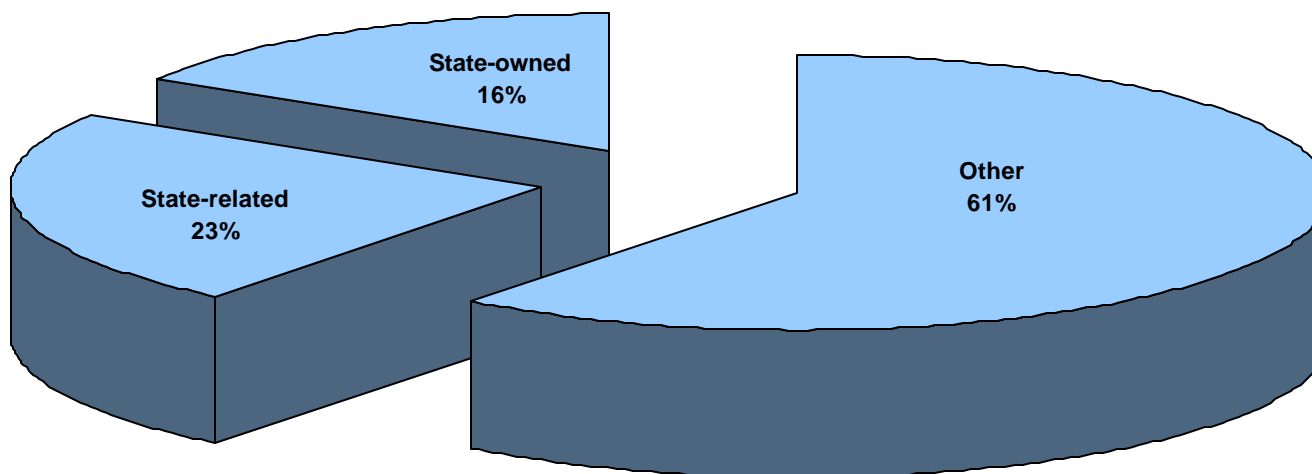
II. HISTORICAL DATA

TABLES		
1.	Full-Time Equivalent Students by Academic Level	27
2.	Student Credit Hours by Academic Division and Level.....	28
3.	Degrees Conferred	30
4.	Number and Average Weekly Student Contact Hours of Full-Time Employed Faculty by Academic Level	31
5.	Number and Average Instructional Salaries of Full-Time Equivalent Instructional Faculty by Rank	32
6.	Average Instructional Faculty Salary Cost Per Full-Time Equivalent Student by Academic Division and Level.....	34
7.	Average Instructional Faculty Salary Cost Per Student Credit Hour by Academic Division and Level.....	35
8.	Average Class Sizes in Classroom Instruction by Academic Division and Level	36
9.	Commonwealth Instructional Appropriations	37
10.	Academic Year Tuition and Required Fees for Full-Time Students.....	38

APPENDIX: MODEL OF FTE SALARY COST DETERMINATION.....	41
---	----

page x blank

FULL- AND PART-TIME STUDENTS
ENROLLED IN PUBLIC AND PRIVATE COLLEGES AND UNIVERSITIES
IN PENNSYLVANIA¹
FALL 1999

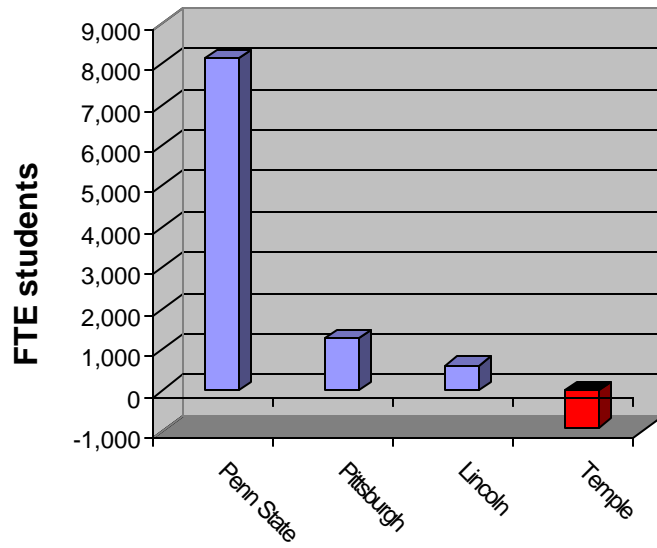


-ix-

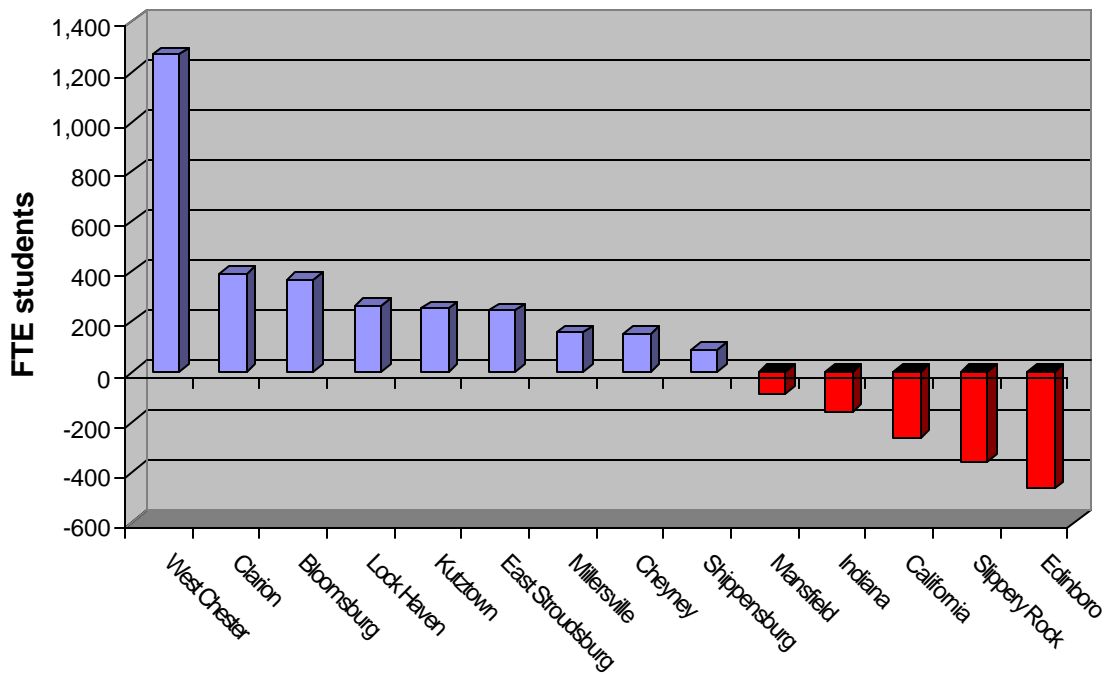
1. In Fall 1999, a total of 589,838 full- and part-time students were enrolled in the 146 public and private colleges and universities in Pennsylvania. Of this total, 233,384 students were enrolled in the Commonwealth's public universities: 138,161 students in the 4 State-related universities, and 95,223 in the 14 State-owned universities.

SOURCE: Pennsylvania Department of Education, *Colleges and Universities Education Digest, 1999-2000*.

**CHANGES IN FTE STUDENT ENROLLMENTS
IN THE STATE-RELATED AND STATE-OWNED UNIVERSITIES
1994-95 to 1999-00**



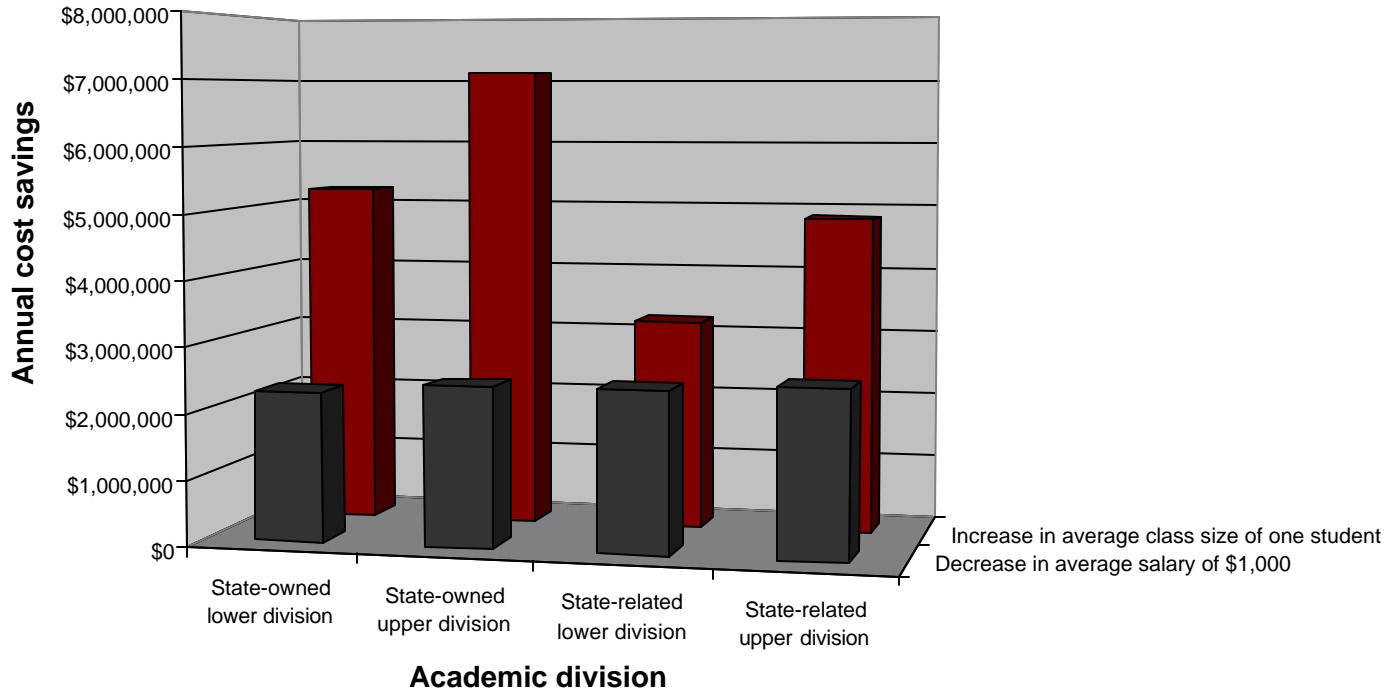
State-related universities



State-owned universities

SOURCE: Data provided by the individual universities, 1995 to 2000.

ESTIMATED ANNUAL COST SAVINGS
 FROM A DECREASE IN AVERAGE SALARY AND AN INCREASE IN AVERAGE CLASS SIZE¹
 FOR THE STATE-RELATED AND STATE-OWNED UNIVERSITIES
 1999-00



1. The estimated total annual cost savings to be expected from *decreasing* average FTE instructional faculty salary by \$1,000 at the State-related and State-owned universities would be almost \$10 million, and from *increasing* average class (section) size by one student about \$20.4 million. The model on which these estimates are based is given in the Appendix.

SOURCE: Data provided by the individual universities, 2000.

page xiv blank

I. CURRENT YEAR DATA

page 2 blank

Table 1

FULL-TIME EQUIVALENT STUDENTS BY ACADEMIC LEVEL¹
1999-00, CHANGE FROM 1998-99 AND FIVE-YEAR AVERAGE ANNUAL RATE OF CHANGE (1994-95 to 1999-00)

University	Total				Undergraduate				Graduate ²			
	FTE students	One-year change	One-year Percentage change	Five-year average	FTE students	One-year change	One-year Percentage change	Five-year average	FTE students	One-year change	One-year Percentage change	Five-year average
State-related												
Lincoln	2,028	-47	-2%	9%	1,515	-84	-5%	5%	513	37	8%	32%
Penn State	69,227	166	a	3	62,954	146	a	3	6,273	20	a	a
Pittsburgh	29,563	341	1	1	21,756	420	2	1	7,807	-79	-1	a
Temple	24,162	876	4	-1	16,908	582	4	-1	7,254	294	4	1
Total	124,980	1,336	1	2	103,133	1,064	1	2	21,847	272	1	a
State-owned												
Bloomsburg	7,408	86	1	1	6,924	73	1	1	484	13	3	4
California	5,468	29	1	-1	4,735	89	2	-1	733	-60	-8	a
Cheyney	1,431	138	11	2	987	18	2	-2	444	120	37	26
Clarion	5,803	123	2	1	5,509	84	2	1	294	39	15	1
East Stroudsburg	5,561	-47	-1	1	4,881	-31	-1	1	680	-16	-2	1
Edinboro	6,504	-37	-1	-1	6,092	-46	-1	-1	412	9	2	a
Indiana	12,680	-317	-2	a	11,583	-268	-2	a	1,097	-49	-4	1
Kutztown	7,162	229	3	1	6,696	207	3	1	466	22	5	2
Lock Haven	3,696	106	3	2	3,529	57	2	1	167	49	42	166
Mansfield	2,808	145	5	-1	2,700	144	6	a	108	1	1	-6
Millersville	6,866	-11	a	a	5,994	-48	-1	a	872	37	4	3
Shippensburg	6,038	-72	-1	a	5,556	-24	a	a	482	-48	-9	-1
Slippery Rock	6,646	62	1	-1	6,024	78	1	-1	622	-16	-3	a
West Chester	10,771	354	3	3	9,757	337	4	3	1,014	17	2	2
Total	88,842	788	1	a	80,967	670	1	a	7,875	118	2	2
All universities	213,822	2,124	1	1	184,100	1,734	1	1	29,722	390	1	1

1. Data for each year represent the summer term preceding the academic year plus the academic year. Full-time equivalent students are calculated by dividing undergraduate student credit hours by 30 and graduate student credit hours by 24.

2. In addition to master's level, graduate for Penn State, Pittsburgh, Temple, Indiana and Slippery Rock includes first-professional (excluding medical schools) and/or doctor's levels.

a. Rounds to less than 1 percent.

SOURCE: Data provided by the individual universities, 1995 to 2000.

Table 2

FULL-TIME EQUIVALENT STUDENTS BY ACADEMIC DIVISION AND LEVEL¹
 1999-00 CHANGE FROM 1998-99 AND FIVE-YEAR AVERAGE ANNUAL RATE OF CHANGE (1994-95 to 1999-00)

University	Lower division			Upper division			Master's			First professional ² and doctor's		
	FTE students	Percentage change		FTE students	Percentage change		FTE students	Percentage change		FTE students	Percentage change	
		One-year	Five-year average		One-year	Five-year average		One-year	Five-year average		One-year	Five-year average
State-related												
Lincoln	1,098	-11%	5%	417	13%	5%	513	8%	32%	na	na	na
Penn State	38,032	-2	2	24,922	4	5	3,304	3	-1	2,969	-2%	1%
Pittsburgh	14,927	2	2	6,829	2	a	4,828	-3	-2	2,979	2	4
Temple	7,709	8	-2	9,199	a	a	3,402	a	-2	3,852	8	4
Total	61,766	a	1	41,367	3	3	12,047	a	-1	9,800	3	3
State-owned												
Bloomsburg	4,816	-1	1	2,108	5	a	484	3	4	na	na	na
California	3,246	2	-1	1,489	2	-1	733	-8	a	na	na	na
Cheyney	724	10	-1	263	-15	-3	444	37	26	na	na	na
Clarion	3,959	a	2	1,550	5	a	294	15	1	na	na	na
East Stroudsburg	3,391	-1	1	1,490	1	2	680	-2	1	na	na	na
Edinboro	3,991	-1	-2	2,101	a	a	412	2	a	na	na	na
Indiana	7,875	-3	a	3,708	-1	-1	857	-3	1	240	-8	3
Kutztown	4,448	4	1	2,248	1	a	466	5	2	na	na	na
Lock Haven	2,491	7	1	1,038	-10	a	167	42	166	na	na	na
Mansfield	1,642	5	-1	1,058	6	a	108	1	-6	na	na	na
Millersville	3,855	a	a	2,139	-2	a	872	4	3	na	na	na
Shippensburg	3,921	a	a	1,635	-2	1	482	-9	-1	na	na	na
Slippery Rock	4,247	1	-1	1,777	1	-1	362	-5	b	260	2	b
West Chester	6,561	2	4	3,196	6	1	1,014	2	2	na	na	na
Total	55,167	1	a	25,800	1	a	7,375	2	1	500	-3	27
All universities	116,933	a	1	67,167	2	2	19,422	1	a	10,300	3	3

1. Data for each year represent the summer term preceding the academic year plus the academic year. Full-time equivalent students are calculated by dividing undergraduate student credit hours by 30 and graduate student credit hours by 24.

2. Excludes medical school data.

a. Rounds to less than 1 percent.

b. The master's level includes the doctor's level prior to 1996-97.

na. Not applicable.

SOURCE: Data provided by the individual universities, 1995 to 2000.

Table 3A

LINCOLN UNIVERSITY
NUMBER AND PERCENTAGE DISTRIBUTION OF FULL-TIME EQUIVALENT STUDENTS¹
BY ACADEMIC DIVISION AND LEVEL AND CIP CLASSIFICATION
1999-00

CIP Classification	Total	Percentage of total	Undergraduate				Graduate ²	Percentage of total
			Lower division	Percentage of total	Upper division	Percentage of total		
Agriculture	--	--	--	--	--	--	--	--
Architecture and environmental design	--	--	--	--	--	--	--	--
Area and ethnic studies	9	a	3	a	6	1%	--	--
Business	145	7%	41	4%	69	17	35	7%
Communications	--	--	--	--	--	--	--	--
Computer and information sciences	63	3	43	4	20	5	--	--
Consumer, personal and miscellaneous services	--	--	--	--	--	--	--	--
Education	197	10	105	10	49	12	43	8
Engineering	--	--	--	--	--	--	--	--
Foreign languages	75	4	69	6	6	1	--	--
Health	--	--	--	--	--	--	--	--
Home economics	--	--	--	--	--	--	--	--
Industrial arts	--	--	--	--	--	--	--	--
Law	--	--	--	--	--	--	--	--
Letters	195	10	173	16	22	5	--	--
Liberal/general studies	--	--	--	--	--	--	--	--
Library and archival sciences	--	--	--	--	--	--	--	--
Life sciences	117	6	100	9	16	4	1	a
Mathematics	130	6	119	11	9	2	2	a
Military sciences	--	--	--	--	--	--	--	--
Multi/interdisciplinary studies	8	a	5	1	3	1	--	--
Parks and recreation	77	4	59	5	18	4	--	--
Personal and social development	--	--	--	--	--	--	--	--
Philosophy, religion and theology	88	4	76	7	12	3	--	--
Physical sciences	96	5	59	5	37	9	--	--
Psychology	80	4	45	4	35	8	--	--
Public affairs and protective services	419	21	--	--	--	--	419	82
Social sciences	242	12	124	11	104	25	14	3
Trade and industrial	--	--	--	--	--	--	--	--
Visual and performing arts	88	4	77	7	11	3	--	--
Other	--	--	--	--	--	--	--	--
Total ³	2,028	100	1,098	100	417	100	513	100

1. Data represent the summer term preceding the academic year plus the academic year. Full-time equivalent students are calculated by dividing undergraduate student credit hours by 30 and graduate student credit hours by 24.

2. Graduate includes master's level only.

3. Because of rounding, CIP detail may not sum to total.

a. Rounds to less than 1 percent.

SOURCE: Data provided by Lincoln University, 2000; CIP classifications - U.S. Department of Education, National Center for Education Statistics, *Classification of Instructional Programs*, 1991.

Table 3B

PENNSYLVANIA STATE UNIVERSITY
NUMBER AND PERCENTAGE DISTRIBUTION OF FULL-TIME EQUIVALENT STUDENTS¹
BY ACADEMIC DIVISION AND LEVEL AND CIP CLASSIFICATION
1999-00

CIP Classification	Total	Percentage of total	Undergraduate				Graduate ²	Percentage of total
			Lower division	Percentage of total	Upper division	Percentage of total		
Agriculture	1,189	2%	234	1%	819	3%	136	2%
Architecture and environmental design	518	1	310	1	197	1	11	a
Area and ethnic studies	820	1	566	1	221	1	33	1
Business	8,475	12	2,509	7	4,934	20	1,032	16
Communications	1,330	2	442	1	849	3	39	1
Computer and information sciences	2,348	3	1,671	4	460	2	217	3
Consumer, personal and miscellaneous services	--	--	--	--	--	--	--	--
Education	3,625	5	777	2	1,427	6	1,421	23
Engineering	4,905	7	1,186	3	2,860	12	859	14
Foreign languages	2,566	4	1,866	5	595	2	105	2
Health	1,852	3	567	1	1,069	4	216	3
Home economics	2,030	3	1,023	3	909	4	98	2
Industrial Arts	--	--	--	--	--	--	--	--
Law	4	a	--	--	--	--	4	a
Letters	6,418	9	4,297	11	1,843	7	278	4
Liberal/general studies	340	a	221	1	106	1	13	a
Library and archival sciences	10	a	7	a	3	a	--	--
Life sciences	3,344	5	2,307	6	791	3	246	4
Mathematics	6,052	9	5,357	14	527	2	168	3
Military sciences	95	a	55	a	40	a	--	--
Multi/interdisciplinary studies	2,472	4	713	2	1,656	7	103	2
Parks and recreation	350	1	40	a	292	1	18	a
Personal and social development	--	--	--	--	--	--	--	--
Philosophy, religion and theology	1,180	2	962	3	166	1	52	1
Physical sciences	4,963	7	3,567	9	918	4	478	8
Psychology	2,262	3	1,306	3	743	3	213	3
Public affairs and protective services	944	1	262	1	593	2	89	1
Social sciences	6,921	10	4,779	13	1,819	7	323	5
Trade and industrial	245	a	241	1	4	a	--	--
Visual and performing arts	3,969	6	2,764	7	1,082	4	123	2
Other	2	a	2	a	--	--	--	--
Total ³	69,227	100	38,032	100	24,922	100	6,273	100

1. Data represent the summer term preceding the academic year plus the academic year. Full-time equivalent students are calculated by dividing undergraduate student credit hours by 30 and graduate student credit hours by 24.

2. Graduate includes master's and/or doctor's levels, and excludes medical school data.

3. Because of rounding, CIP detail may not sum to total.

a. Rounds to less than 1 percent.

SOURCE: Data provided by Pennsylvania State University, 2000; CIP classifications - U.S. Department of Education, National Center for Education Statistics, *Classification of Instructional Programs*, 1991.

Table 3C

UNIVERSITY OF PITTSBURGH
NUMBER AND PERCENTAGE DISTRIBUTION OF FULL-TIME EQUIVALENT STUDENTS¹
BY ACADEMIC DIVISION AND LEVEL AND CIP CLASSIFICATION
1999-00

CIP Classification	Total	Percentage of total	Undergraduate				Graduate ²	Percentage of total
			Lower division	Percentage of total	Upper division	Percentage of total		
Agriculture	--	--	--	--	--	--	--	--
Architecture and environmental design	--	--	--	--	--	--	--	--
Area and ethnic studies	127	a	78	1%	49	1%	--	--
Business	2,125	7%	395	3	828	12	902	12%
Communications	134	a	14	a	22	a	98	1
Computer and information sciences	1,320	4	751	5	298	4	271	3
Consumer, personal and miscellaneous services	--	--	--	--	--	--	--	--
Education	2,070	7	481	3	451	7	1,138	15
Engineering	1,454	5	438	3	592	9	424	5
Foreign languages	1,641	6	1,156	8	390	6	95	1
Health	3,099	11	219	1	683	10	2,197	28
Home economics	52	a	--	--	51	1	1	a
Industrial Arts	--	--	--	--	--	--	--	--
Law	849	3	--	--	--	--	849	11
Letters	2,762	9	1,941	13	703	10	118	2
Liberal/general studies	--	--	--	--	--	--	--	--
Library and archival sciences	169	1	1	a	6	a	162	2
Life sciences	1,137	4	743	5	318	5	76	1
Mathematics	1,945	7	1,620	11	246	4	79	1
Military sciences	12	a	5	a	7	a	--	--
Multi/interdisciplinary studies	245	1	185	1	57	1	3	a
Parks and recreation	--	--	--	--	--	--	--	--
Personal and social development	--	--	--	--	--	--	--	--
Philosophy, religion and theology	712	2	517	3	155	2	40	1
Physical sciences	2,087	7	1,738	12	144	2	205	3
Psychology	1,321	4	1,003	7	241	3	77	1
Public affairs and protective services	1,446	5	128	1	472	7	846	11
Social sciences	3,727	13	2,575	17	964	14	188	2
Trade and industrial	--	--	--	--	--	--	--	--
Visual and performing arts	1,129	4	938	6	152	2	39	a
Other	--	--	--	--	--	--	--	--
Total ³	29,563	100	14,927	100	6,829	100	7,807	100

1. Data represent the summer term preceding the academic year plus the academic year. Full-time equivalent students are calculated by dividing undergraduate student credit hours by 30 and graduate student credit hours by 24.

2. Graduate includes master's, first-professional (excluding medical school) and/or doctor's levels.

3. Because of rounding, CIP detail may not sum to total.

a. Rounds to less than 1 percent.

SOURCE: Data provided by University of Pittsburgh, 2000; CIP classifications - U.S. Department of Education, National Center for Education Statistics, *Classification of Instructional Programs*, 1991.

Table 3D

TEMPLE UNIVERSITY
NUMBER AND PERCENTAGE DISTRIBUTION OF FULL-TIME EQUIVALENT STUDENTS¹
BY ACADEMIC DIVISION AND LEVEL AND CIP CLASSIFICATION
1999-00

CIP Classification	Total	Percentage of total	Undergraduate				Graduate ²	Percentage of total
			Lower division	Percentage of total	Upper division	Percentage of total		
Agriculture	65	a	31	a	32	a	2	a
Architecture and environmental design	265	1%	85	1%	179	2%	1	a
Area and ethnic studies	305	1	147	2	126	1	32	a
Business	2,712	11	720	9	1,322	14	670	9%
Communications	621	3	207	3	334	4	80	1
Computer and information sciences	679	3	233	3	328	4	118	2
Consumer, personal and miscellaneous services	--	--	--	--	--	--	--	--
Education	2,220	9	429	6	1,066	12	725	10
Engineering	399	2	93	1	245	3	61	1
Foreign languages	683	3	374	5	275	3	34	1
Health	3,367	14	93	1	745	8	2,529	35
Home economics	--	--	--	--	--	--	--	--
Industrial Arts	--	--	--	--	--	--	--	--
Law	1,667	7	143	2	136	1	1,388	19
Letters	1,179	5	714	9	406	4	59	1
Liberal/general studies	475	2	352	5	123	1	--	--
Library and archival sciences	--	--	--	--	--	--	--	--
Life sciences	371	1	164	2	174	2	33	a
Mathematics	1,199	5	750	10	353	4	96	1
Military sciences	7	a	4	a	3	a	--	--
Multi/interdisciplinary studies	--	--	--	--	--	--	--	--
Parks and recreation	--	--	--	--	--	--	--	--
Personal and social development	--	--	--	--	--	--	--	--
Philosophy, religion and theology	416	2	203	3	171	2	42	1
Physical sciences	873	4	481	6	327	3	65	1
Psychology	1,169	5	320	4	430	5	419	6
Public affairs and protective services	979	4	174	2	421	5	384	5
Social sciences	2,493	10	1,164	15	1,096	12	233	3
Trade and industrial	--	--	--	--	--	--	--	--
Visual and performing arts	2,021	8	828	11	910	10	283	4
Other	--	--	--	--	--	--	--	--
Total ³	24,162	100	7,709	100	9,199	100	7,254	100

1. Data represent the summer term preceding the academic year plus the academic year. Full-time equivalent students are calculated by dividing undergraduate student credit hours by 30 and graduate student credit hours by 24.

2. Graduate includes master's, first-professional (excluding medical school) and/or doctor's levels.

3. Because of rounding, CIP detail may not sum to total.

a. Rounds to less than 1 percent.

SOURCE: Data provided by Temple University, 2000; CIP classifications - U.S. Department of Education, National Center for Education Statistics, *Classification of Instructional Programs*, 1991.

Table 3E

STATE-OWNED UNIVERSITIES
NUMBER AND PERCENTAGE DISTRIBUTION OF FULL-TIME EQUIVALENT STUDENTS¹
BY ACADEMIC DIVISION AND LEVEL AND CIP CLASSIFICATION
1999-00

CIP Classification	Total	Percentage of total	Undergraduate				Graduate ²	Percentage of total
			Lower division	Percentage of total	Upper division	Percentage of total		
Agriculture	151	a	138	a	11	a	2	a
Architecture and environmental design	18	a	3	a	14	a	1	a
Area and ethnic studies	396	a	229	a	151	1%	16	a
Business	7,382	8%	2,929	5%	3,885	15	568	7%
Communications	2,656	3	1,464	3	1,086	4	106	1
Computer and information sciences	2,206	2	1,629	3	487	2	90	1
Consumer, personal and miscellaneous services	--	--	--	--	--	--	--	--
Education	16,390	18	5,102	9	7,189	28	4,099	52
Engineering	214	a	92	a	101	a	21	a
Foreign languages	2,402	3	2,035	4	315	1	52	1
Health	2,959	3	854	2	1,427	6	678	9
Home economics	549	1	256	a	276	1	17	a
Industrial arts	623	1	213	a	202	1	208	3
Law	159	a	86	a	53	a	20	a
Letters	8,524	10	6,706	12	1,588	6	230	3
Liberal/general studies	175	a	155	a	9	a	11	a
Library and archival sciences	191	a	18	a	49	a	124	2
Life sciences	3,748	4	2,908	5	698	3	142	2
Mathematics	5,348	6	4,712	9	500	2	136	2
Military sciences	121	a	90	a	31	a	--	--
Multi/interdisciplinary studies	383	a	309	1	49	a	25	a
Parks and recreation	1,065	1	599	1	422	2	44	1
Personal and social development	269	a	218	a	16	a	35	a
Philosophy, religion and theology	1,976	2	1,651	3	302	1	23	a
Physical sciences	4,609	5	4,040	7	515	2	54	1
Psychology	5,368	6	3,271	6	1,512	6	585	7
Public affairs and protective services	1,653	2	721	1	820	3	112	1
Social sciences	12,675	14	9,623	17	2,681	10	371	5
Trade and industrial	51	a	40	a	11	a	--	--
Visual and performing arts	6,483	7	4,968	9	1,405	5	110	1
Other	122	a	119	a	--	--	3	a
Total ³	88,842	100	55,167	100	25,800	100	7,875	100

1. Data represent the summer term preceding the academic year plus the academic year. Full-time equivalent students are calculated by dividing undergraduate student credit hours by 30 and graduate student credit hours by 24.

2. Graduate includes master's level for all universities and doctor's level for Indiana and Slippery Rock.

3. Because of rounding, CIP detail may not sum to total.

a. Rounds to less than 1 percent.

SOURCE: Data provided by the individual State-owned universities, 2000; CIP classifications - U.S. Department of Education, National Center for Education Statistics, *Classification of Instructional Programs*, 1991.

Table 4

DEGREES CONFERRED¹
 1999-00, CHANGE FROM 1998-99 AND FIVE-YEAR AVERAGE ANNUAL RATE OF CHANGE (1994-95 to 1999-00)

University	Total				Bachelor's				Graduate ²			
	Degrees	One-year change	Percentage change		Degrees	One-year change	Percentage change		Degrees	One-year change	Percentage change	
		One-year	Five-year		One-year	One-year	Five-year		One-year	One-year	Five-year	
		change	average	average	change	change	average	change	change	change	average	average
State-related												
Lincoln	501	137	38%	14%	285	91	47%	5%	216	46	27%	38%
Penn State	13,150	567	5	3	10,585	541	5	4	2,565	26	1	2
Pittsburgh	6,578	45	1	-1	3,915	131	3	-1	2,663	-86	-3	-2
Temple	5,519	22	a	-1	3,164	29	1	-1	2,355	-7	a	-1
Total	25,748	771	3	1	17,949	792	5	2	7,799	-21	a	a
State-owned												
Bloomsburg	1,537	106	7	a	1,316	120	10	-1	221	-14	-6	3
California	1,110	-150	-12	a	809	-120	-13	-1	301	-30	-9	2
Cheyney	350	92	36	6	152	25	20	-4	198	67	51	30
Clarion	1,041	116	13	a	888	114	15	1	153	2	1	-2
East Stroudsburg	1,128	90	9	1	902	103	13	1	226	-13	-5	a
Edinboro	1,283	141	12	-2	1,138	128	13	-1	145	13	10	-6
Indiana	2,713	109	4	1	2,119	56	3	a	594	53	10	5
Kutztown	1,504	138	10	2	1,237	99	9	1	267	39	17	7
Lock Haven	645	-15	-2	1	609	-29	-5	a	36	14	64	700
Mansfield	513	-57	-10	-3	461	-47	-9	-3	52	-10	-16	-6
Millersville	1,383	-68	-5	a	1,212	-56	-4	a	171	-12	-7	3
Shippensburg	1,390	-98	-7	-1	1,124	-55	-5	a	266	-43	-14	-3
Slippery Rock	1,245	-97	-7	-2	1,062	-83	-7	-2	183	-14	-7	a
West Chester	2,150	160	8	1	1,731	172	11	1	419	-12	-3	2
Total	17,992	467	3	a	14,760	427	3	a	3,232	40	1	2
All universities	43,740	1,238	3	1	32,709	1,219	4	1	11,031	19	a	1

1. Data for each year represent the summer term preceding the academic year plus the academic year.

2. Graduate includes master's at all universities, first professional (excluding medical schools) at Pittsburgh and Temple, and doctor's at Penn State, Pittsburgh, Temple, Indiana and Slippery Rock.

a. Rounds to less than 1 percent.

SOURCE: Data provided by the individual universities, 1995 to 2000.

Table 5

NUMBER AND WORKWEEKS OF FULL-TIME EMPLOYED FACULTY BY TYPE OF ACTIVITY
FALL 1999, AND PERCENTAGE CHANGE FROM FALL 1998

University	Full-time employed faculty ¹	Average weekly hours ²										Total work- week	Percentage change
		Student contact				Instruc- tional support ³	Other						
		Under- graduate	Percentage change	Graduate	Percentage change		Percentage change	university service ⁴	Percentage change	work- week			
State-related													
Lincoln	93	11.6	8%	0.7	-22%	22.6	a	13.1	12%	9.3	-9%	57.3	2%
Penn State	3,178	6.6	3	1.7	0	19.3	2%	16.7	-2	7.8	-1	52.1	a
Pittsburgh	1,731	4.4	-2	3.7	0	13.1	-2	18.2	-1	12.3	0	51.7	-1
Temple	1,045	5.6	2	3.9	-5	18.2	-3	13.6	2	12.3	0	53.6	-1
Total	6,047	5.9	4	2.6	-4	17.4	0	16.6	-1	9.8	-2	52.3	a
State-owned													
Bloomsburg	360	11.2	2	0.9	0	17.8	2	8.7	4	17.8	2	56.4	2
California	261	10.1	1	1.5	-12	18.6	1	6.3	-6	18.0	-4	54.5	-2
Cheyney ⁵	90	11.1	1	1.5	50	16.7	7	6.6	0	16.2	-13	52.1	-1
Clarion	324	10.8	-3	0.9	13	19.5	1	8.4	-3	13.4	2	53.0	a
East Stroudsburg	256	10.7	-3	1.1	-8	17.3	-1	8.4	5	17.8	-2	55.3	-1
Edinboro	341	12.2	-7	1.2	20	16.4	-8	8.5	-2	15.8	8	54.1	-2
Indiana	721	10.1	1	1.3	-7	18.0	4	9.9	-1	18.6	-3	57.9	0
Kutztown	380	11.3	0	0.6	0	17.1	3	8.5	-3	16.8	-3	54.3	-1
Lock Haven	206	11.9	3	0.2	0	18.7	4	6.5	0	17.1	-8	54.4	a
Mansfield	149	11.2	2	0.7	17	22.1	2	9.7	-6	17.9	1	61.6	a
Millersville	317	10.6	0	0.9	13	17.2	6	8.5	1	17.2	-1	54.4	2
Shippensburg	288	10.2	5	0.8	-11	18.5	3	8.5	5	17.9	-5	55.9	1
Slippery Rock	359	10.0	3	0.9	13	18.3	0	9.0	3	17.9	2	56.1	2
West Chester	566	10.1	-3	1.6	0	17.2	-1	12.3	3	18.8	2	60.0	a
Total	4,618	10.7	0	1.0	0	18.0	2	8.9	0	17.4	-1	56.0	a
All universities	10,665	7.9	0	2.0	0	17.6	1	13.4	0	13.0	-2	53.9	a

1. The number of full-time employed faculty represents those reported by each university for the fall term.
 2. Averages calculated for the full-time employed faculty who reported complete workweeks of 100 hours or less for the fall term.
 3. Includes course preparation and evaluation.
 4. Includes public service, institutional support and student services.
 5. No data for Fall 1998; percentage change is from Fall 1997.
- a. Rounds to less than 1 percent.

SOURCE: Data provided by the individual universities, 1999 and 2000.

Table 6

NUMBER AND AVERAGE INSTRUCTIONAL SALARIES OF FULL-TIME EQUIVALENT INSTRUCTIONAL FACULTY AND PERCENTAGE DISTRIBUTION BY RANK¹
 1999-00
 (Dollars in thousands)

University	FTE		Average		Professor		Associate professor		Assistant professor		Instructor		No rank ²	
	Number	Percentage	Amount	Percentage	Average	Percent-	Average	Percent-	Average	Percent-	Average	Percent-	Average	Percent-
		change		change										
		1998-99 to		1998-99 to	tional	age of	tional	age of	tional	age of	tional	age of	tional	age of
		1999-00		1999-00	salary	faculty	salary	faculty	salary	faculty	salary	faculty	salary	faculty
State-related														
Lincoln	137	-1%	\$34.2	a	\$54.1	21%	\$40.4	11%	\$32.4	29%	\$22.1	21%	\$24.2	18%
Penn State	3,842	2	52.2	4%	89.8	16	60.8	18	51.0	22	38.8	15	34.8	29
Pittsburgh	1,811	1	47.6	1	77.7	20	53.3	22	43.4	19	28.4	15	33.7	24
Temple	1,451	4	49.1	2	78.3	26	59.5	22	42.3	15	26.9	17	24.4	20
Total	7,241	2	50.1	3	82.8	19	58.2	19	47.4	20	33.3	16	32.7	26
State-owned														
Bloomsburg	403	1	56.0	4	72.1	28	58.5	32	45.7	29	33.6	11	na	na
California	282	0	57.2	3	73.4	40	49.0	31	51.5	13	35.1	14	47.9	2
Cheyney	105	-1	53.8	-7	77.3	24	64.3	25	46.0	24	30.3	27	na	na
Clarion	319	a	55.3	-1	74.1	30	57.6	26	44.9	30	33.0	14	50.7	a
East Stroudsburg	286	a	57.4	2	75.9	33	61.8	27	45.1	25	28.9	15	na	na
Edinboro	400	4	55.4	1	71.0	28	57.5	26	47.3	35	35.1	11	na	na
Indiana	834	9	49.1	-6	60.0	33	50.1	28	41.7	29	32.9	9	30.8	1
Kutztown	380	2	58.0	2	77.8	29	61.9	27	46.3	32	32.0	12	na	na
Lock Haven	205	12	52.6	a	75.6	21	59.4	26	43.8	36	32.9	17	na	na
Mansfield	166	-3	59.0	9	79.4	28	60.6	36	48.5	23	31.2	13	11.4	a
Millersville	406	0	55.3	3	71.9	33	58.5	24	44.9	29	31.1	14	na	na
Shippensburg	306	2	57.3	a	75.2	31	63.5	14	47.8	47	33.4	8	37.6	a
Slippery Rock	351	a	57.4	-1	71.4	31	57.7	27	48.2	35	39.7	7	85.1	a
West Chester	629	3	51.0	1	71.0	24	58.5	25	46.6	22	31.4	28	34.5	1
Total	5,072	3	54.5	a	71.1	30	57.1	27	45.7	29	32.5	14	35.6	a
All universities	12,313	2	51.9	2	76.6	23	57.7	22	46.5	24	33.0	15	32.8	16

1. Average instructional salaries are calculated by dividing the total instructional salaries paid to all staff members in the respective ranks by their total full-time equivalency in the instructional function. One full-time equivalent faculty represents one full-time workload for two terms (one academic year). The summer term is treated as one term or one-half of the academic year. Data for each year represent the summer term preceding the academic year plus the academic year.

2. The full-time equivalency of nonranked faculty members is based on the time spent in instruction by all nonranked personnel, including lecturers, administrators, librarians, research staff, graduate assistants and volunteers.

a. Rounds to less than 1 percent.

na. Not applicable.

SOURCE: Data provided by the individual universities, 1999 and 2000.

Table 7

AVERAGE INSTRUCTIONAL FACULTY SALARY COST PER FULL-TIME EQUIVALENT STUDENT BY ACADEMIC DIVISION AND LEVEL¹
1999-00, CHANGE FROM 1998-99 AND FIVE-YEAR AVERAGE ANNUAL RATE OF CHANGE (1994-95 to 1999-00)

University	Undergraduate						Master's					
	Lower division	Percentage change		Upper division	Percentage change		Total undergraduate	Percentage change		Total master's	Percentage change	
		One-year	Five-year average		One-year	Five-year average		One-year	Five-year average		One-year	Five-year average
State-related												
Lincoln	\$2,133	2%	1%	\$3,376	a	1%	\$2,475	3%	1%	\$1,787	-2%	-1%
Penn State	1,759	11	4	3,056	4%	4	2,272	8	4	5,281	8	5
Pittsburgh	1,580	-3	a	3,206	3	1	2,090	a	a	5,320	2	2
Temple	1,998	a	4	2,924	6	4	2,502	3	4	3,757	2	4
Total	1,751	6	3	3,051	4	3	2,272	5	3	4,718	3	3
State-owned												
Bloomsburg	2,369	4	1	4,261	2	3	2,945	4	2	4,519	6	4
California	2,242	2	2	3,875	-3	2	2,755	a	2	4,164	9	4
Cheyney ²	4,283	--	7	6,246	--	4	4,806	--	5	2,058	--	-6
Clarion	2,215	-7	-1	4,789	-1	1	2,939	-4	a	4,914	-9	-2
East Stroudsburg	2,377	1	1	4,257	2	1	2,951	2	1	2,966	15	2
Edinboro	2,546	a	2	4,657	11	3	3,275	5	3	5,400	8	4
Indiana	2,140	5	2	4,680	6	3	2,955	6	2	6,190	4	1
Kutztown	2,111	1	1	4,782	4	3	3,008	2	2	4,096	-1	-1
Lock Haven	2,349	10	2	4,136	10	a	2,873	7	1	4,095	27	-5
Mansfield	2,632	4	4	4,781	-5	-1	3,474	a	2	4,015	10	-1
Millersville	2,907	2	3	4,161	10	3	3,355	6	3	2,684	-14	-5
Shippensburg	2,333	2	a	3,888	3	-1	2,791	2	a	4,328	13	2
Slippery Rock	2,462	-1	1	4,282	-3	1	2,999	-2	1	4,933	6	b
West Chester	2,322	a	a	3,844	-1	2	2,820	a	a	4,528	6	2
Total	2,375	3	1	4,356	4	2	3,006	3	2	4,195	1	1
All universities	2,045	4	2	3,553	4	2	2,595	4	2	4,521	2	2

1. The average instructional faculty salary cost per full-time equivalent student for each level is calculated as follows: the instructional salary for each rank is assigned by level according to the percentage distribution of the course (assigned) credits within each rank. The salary for each rank is summed by level and divided by total full-time equivalent students for that level. For individual instruction, one course (assigned) credit is attributed to every three student credit hours generated.

2. No data for Cheyney University for 1998-99.

a. Rounds to less than 1 percent.

b. The master's level includes the doctor's level prior to 1997-98.

SOURCE: Data provided by the individual universities, 1995 to 2000.

Table 8A

LINCOLN UNIVERSITY
 AVERAGE INSTRUCTIONAL FACULTY SALARY COST PER FULL-TIME EQUIVALENT STUDENT¹
 BY ACADEMIC DIVISION AND LEVEL AND CIP CLASSIFICATION
 1999-00

CIP classification	Undergraduate			Graduate		
	Lower division	Upper division	Total undergraduate	Master's	First professional	Doctor's
Agriculture	--	--	--	--	--	--
Architecture and environmental design	--	--	--	--	--	--
Area and ethnic studies	\$2,017	\$3,038	\$2,690	--	--	--
Business	1,380	2,868	2,317	\$3,183	--	--
Communications	--	--	--	--	--	--
Computer and information sciences	2,009	1,651	1,896	--	--	--
Consumer, personal and miscellaneous services	--	--	--	--	--	--
Education	1,545	2,075	1,714	2,431	--	--
Engineering	--	--	--	--	--	--
Foreign languages	3,370	9,305	3,827	--	--	--
Health	--	--	--	--	--	--
Home economics	--	--	--	--	--	--
Industrial arts	--	--	--	--	--	--
Law	--	--	--	--	--	--
Letters	1,881	4,243	2,143	--	--	--
Liberal/general studies	--	--	--	--	--	--
Library and archival sciences	--	--	--	--	--	--
Life sciences	1,503	4,438	1,917	--	--	--
Mathematics	2,216	6,666	2,520	--	--	--
Military sciences	--	--	--	--	--	--
Multi/interdisciplinary studies	2,322	2,191	2,276	--	--	--
Parks and recreation	2,272	2,815	2,400	--	--	--
Personal and social development	--	--	--	--	--	--
Philosophy, religion and theology	1,468	3,181	1,707	--	--	--
Physical sciences	3,734	4,106	3,878	--	--	--
Psychology	2,072	5,216	3,443	--	--	--
Public affairs and protective services	--	--	--	1,461	--	--
Social sciences	2,002	2,941	2,430	2,713	--	--
Trade and industrial	--	--	--	--	--	--
Visual and performing arts	3,113	3,937	3,217	--	--	--
Other	--	--	--	--	--	--
Total	2,133	3,376	2,475	1,787	--	--

1. The average instructional faculty salary cost per full-time equivalent student for each level is calculated as follows: the instructional salary for each rank is assigned by level according to the percentage distribution of the course (assigned) credits within each rank. The salary for each rank is summed by level and divided by total full-time equivalent students for that level. For individual instruction, one course (assigned) credit is attributed to every three student credit hours generated.

SOURCE: Data provided by Lincoln University, 2000; CIP classifications - U.S. Department of Education, National Center for Education Statistics, *Classification of Instructional Programs*, 1991.

Table 8B

PENNSYLVANIA STATE UNIVERSITY
 AVERAGE INSTRUCTIONAL FACULTY SALARY COST PER FULL-TIME EQUIVALENT STUDENT¹
 BY ACADEMIC DIVISION AND LEVEL AND CIP CLASSIFICATION
 1999-00

CIP classification	Undergraduate			Graduate		
	Lower division	Upper division	Total undergraduate	Master's	First professional ²	Doctor's
Agriculture	\$2,006	\$2,863	\$2,673	\$8,380	--	\$12,099
Architecture and environmental design	1,899	4,885	3,059	14,619	--	27,081
Area and ethnic studies	1,821	3,982	2,429	6,897	--	16,473
Business	1,557	2,765	2,358	3,384	--	8,699
Communications	1,300	2,883	2,341	5,586	--	21,463
Computer and information sciences	2,289	3,316	2,510	3,088	--	20,351
Consumer, personal and miscellaneous services	--	--	--	--	--	--
Education	1,562	3,072	2,539	1,940	--	5,484
Engineering	3,949	4,153	4,093	7,255	--	19,782
Foreign languages	1,979	2,808	2,180	8,878	--	14,719
Health	1,978	3,686	3,094	6,318	--	11,399
Home economics	990	2,456	1,680	4,626	--	17,485
Industrial arts	--	--	--	--	--	--
Law	--	--	--	1,408	--	--
Letters	1,997	2,656	2,195	5,156	--	17,194
Liberal/general studies	3,514	3,150	3,396	6,470	--	--
Library and archival sciences	5,019	1,718	3,965	--	--	--
Life sciences	1,471	2,768	1,802	10,812	--	17,246
Mathematics	1,848	3,243	1,973	4,361	--	17,992
Military sciences	--	--	--	--	--	--
Multi/interdisciplinary studies	2,087	2,281	2,223	4,351	--	9,456
Parks and recreation	408	1,804	1,636	9,697	--	13,374
Personal and social development	--	--	--	--	--	--
Philosophy, religion and theology	1,353	3,158	1,619	6,497	--	16,462
Physical sciences	1,863	3,916	2,283	14,643	--	17,269
Psychology	935	2,208	1,397	5,372	--	10,118
Public affairs and protective services	979	2,554	2,071	3,493	--	16,311
Social sciences	1,200	3,139	1,735	7,812	--	18,680
Trade and industrial	3,836	--	3,836	--	--	--
Visual and performing arts	1,594	3,363	2,092	7,527	--	12,586
Other	1,708	--	1,708	--	--	--
Total	1,759	3,056	2,272	5,281	--	13,602

1. The average instructional faculty salary cost per full-time equivalent student for each level is calculated as follows: the instructional salary for each rank is assigned by level according to the percentage distribution of the course (assigned) credits within each rank. The salary for each rank is summed by level and divided by total full-time equivalent students for that level. For individual instruction, one course (assigned) credit is attributed to every three student credit hours generated.

2. Excludes medical school data.

SOURCE: Data provided by Pennsylvania State University, 2000; CIP classifications - U.S. Department of Education, National Center for Education Statistics, *Classification of Instructional Programs*, 1991.

Table 8C

UNIVERSITY OF PITTSBURGH
 AVERAGE INSTRUCTIONAL FACULTY SALARY COST PER FULL-TIME EQUIVALENT STUDENT¹
 BY ACADEMIC DIVISION AND LEVEL AND CIP CLASSIFICATION
 1999-00

CIP classification	Undergraduate			Graduate		
	Lower division	Upper division	Total undergraduate	Master's	First professional ²	Doctor's
Agriculture	--	--	--	--	--	--
Architecture and environmental design	--	--	--	--	--	--
Area and ethnic studies	\$1,498	\$4,145	\$2,517	\$9,826	--	--
Business	1,826	2,091	2,006	3,139	--	\$30,272
Communications	2,952	5,627	4,559	2,343	--	14,241
Computer and information sciences	1,201	2,550	1,584	3,391	--	13,349
Consumer, personal and miscellaneous services	--	--	--	--	--	--
Education	1,486	2,605	2,027	2,727	--	8,365
Engineering	2,444	3,591	3,103	6,942	--	13,494
Foreign languages	2,074	2,308	2,133	7,276	--	16,140
Health	1,959	4,805	4,114	9,197	\$1,378	23,705
Home economics	--	2,416	2,416	13,318	--	--
Industrial arts	--	--	--	--	--	--
Law	--	--	--	--	2,545	15,785
Letters	1,841	2,894	2,121	4,839	--	14,967
Liberal/general studies	--	--	--	--	--	--
Library and archival sciences	--	688	688	3,456	--	16,989
Life sciences	1,857	3,849	2,455	16,410	--	21,791
Mathematics	1,611	2,757	1,762	8,254	--	18,479
Military sciences	--	--	--	--	--	--
Multi/interdisciplinary studies	1,551	3,229	1,948	695	--	--
Parks and recreation	--	--	--	--	--	--
Personal and social development	--	--	--	--	--	--
Philosophy, religion and theology	1,730	3,101	2,047	12,704	--	22,696
Physical sciences	1,573	7,902	2,058	13,006	--	14,189
Psychology	689	2,629	1,065	7,800	--	11,415
Public affairs and protective services	1,307	2,029	1,875	2,964	13,190	7,763
Social sciences	1,384	3,352	1,920	10,603	5,195	17,023
Trade and industrial	--	--	--	--	--	--
Visual and performing arts	1,373	5,795	1,988	12,691	--	20,450
Other	--	--	--	--	--	--
Total	1,580	3,206	2,090	5,320	1,854	13,588

1. The average instructional faculty salary cost per full-time equivalent student for each level is calculated as follows: the instructional salary for each rank is assigned by level according to the percentage distribution of the course (assigned) credits within each rank. The salary for each rank is summed by level and divided by total full-time equivalent students for that level. For individual instruction, one course (assigned) credit is attributed to every three student credit hours generated.

2. Excludes medical school data.

SOURCE: Data provided by University of Pittsburgh, 2000; CIP classifications - U.S. Department of Education, National Center for Education Statistics, *Classification of Instructional Programs*, 1991.

Table 8D

TEMPLE UNIVERSITY
 AVERAGE INSTRUCTIONAL FACULTY SALARY COST PER FULL-TIME EQUIVALENT STUDENT¹
 BY ACADEMIC DIVISION AND LEVEL AND CIP CLASSIFICATION
 1999-00

CIP classification	Undergraduate			Graduate		
	Lower division	Upper division	Total undergraduate	Master's	First professional ²	Doctor's
Agriculture	\$2,468	\$2,897	\$2,686	\$1,679	--	--
Architecture and environmental design	2,926	3,924	3,602	--	--	--
Area and ethnic studies	2,032	2,903	2,433	9,411	--	\$9,530
Business	1,938	2,684	2,421	3,038	--	12,554
Communications	1,453	3,264	2,570	5,120	--	9,438
Computer and information sciences	1,958	3,525	2,875	3,892	--	6,841
Consumer, personal and miscellaneous services	--	--	--	--	--	--
Education	1,723	2,476	2,260	2,687	--	5,401
Engineering	3,602	5,296	4,828	9,051	--	21,378
Foreign languages	2,416	3,757	2,984	4,784	--	11,660
Health	2,578	1,961	2,029	4,048	\$2,968	14,526
Home economics	--	--	--	--	--	--
Industrial arts	--	--	--	--	--	--
Law	1,652	2,815	2,218	2,962	3,335	--
Letters	2,169	2,951	2,453	7,377	--	8,688
Liberal/general studies	1,403	1,240	1,361	1,584	--	--
Library and archival sciences	--	--	--	--	--	--
Life sciences	1,045	2,858	1,978	2,788	--	14,493
Mathematics	2,131	3,390	2,533	4,100	--	21,089
Military sciences	--	--	--	--	--	--
Multi/interdisciplinary studies	--	--	--	--	--	--
Parks and recreation	--	--	--	--	--	--
Personal and social development	--	--	--	--	--	--
Philosophy, religion and theology	2,387	3,303	2,806	8,310	--	14,557
Physical sciences	1,909	2,999	2,350	5,072	--	13,509
Psychology	1,364	2,688	2,123	3,103	--	7,826
Public affairs and protective services	1,815	2,148	2,051	2,899	--	12,675
Social sciences	1,689	2,690	2,174	4,149	--	8,845
Trade and industrial	--	--	--	--	--	--
Visual and performing arts	2,700	3,877	3,316	6,661	--	9,954
Other	--	--	--	--	--	--
Total	1,998	2,924	2,502	3,757	3,113	9,250

1. The average instructional faculty salary cost per full-time equivalent student for each level is calculated as follows: the instructional salary for each rank is assigned by level according to the percentage distribution of the course (assigned) credits within each rank. The salary for each rank is summed by level and divided by total full-time equivalent students for that level. For individual instruction, one course (assigned) credit is attributed to every three student credit hours generated.

2. Excludes medical school data.

SOURCE: Data provided by Temple University, 2000; CIP classifications - U.S. Department of Education, National Center for Education Statistics, *Classification of Instructional Programs*, 1991.

Table 8E

STATE-OWNED UNIVERSITIES
 AVERAGE INSTRUCTIONAL FACULTY SALARY COST PER FULL-TIME EQUIVALENT STUDENT¹
 BY ACADEMIC DIVISION AND LEVEL AND CIP CLASSIFICATION
 1999-00

CIP classification	Undergraduate			Graduate		
	Lower division	Upper division	Total undergraduate	Master's	First professional	Doctor's
Agriculture	\$1,408	\$4,109	\$1,607	\$9,749	--	--
Architecture and environmental design	5,076	3,123	3,467	14,574	--	--
Area and ethnic studies	2,311	3,481	2,776	5,154	--	--
Business	2,309	3,509	2,993	4,346	--	--
Communications	2,333	3,788	2,952	5,403	--	--
Computer and information sciences	2,711	4,509	3,125	3,937	--	--
Consumer, personal and miscellaneous services	--	--	--	--	--	--
Education ²	2,006	3,817	3,065	3,133	--	\$5,186
Engineering	5,050	6,616	5,869	5,386	--	--
Foreign languages	3,076	6,763	3,570	5,107	--	--
Health ²	3,168	5,102	4,378	5,294	--	1,299
Home economics	1,868	3,865	2,904	9,726	--	--
Industrial Arts	3,887	5,050	4,453	2,382	--	--
Law	2,209	2,071	2,156	2,566	--	--
Letters ²	2,488	4,221	2,820	7,093	--	5,874
Liberal/general studies	2,402	5,232	2,557	1,094	--	--
Library and archival sciences	2,997	4,088	3,795	3,450	--	--
Life sciences	2,544	7,102	3,426	9,335	--	--
Mathematics	2,547	5,277	2,809	6,128	--	--
Military sciences	--	--	--	--	--	--
Multi/interdisciplinary studies	2,219	4,620	2,547	4,237	--	--
Parks and recreation	2,519	3,474	2,914	8,587	--	--
Personal and social development	3,976	8,266	4,269	4,264	--	--
Philosophy, religion and theology	2,214	3,806	2,460	7,474	--	--
Physical sciences	3,017	10,026	3,809	11,949	--	--
Psychology ²	1,823	3,561	2,373	3,997	--	9,760
Public affairs and protective services	1,877	3,563	2,774	4,265	--	--
Social sciences ²	1,895	4,303	2,420	6,612	--	6,638
Trade and industrial	4,514	7,606	5,181	--	--	--
Visual and performing arts	2,615	6,787	3,534	14,413	--	--
Other	3,365	--	3,365	1,452	--	--
Total	2,375	4,356	3,006	4,195	--	3,833

1. The average instructional faculty salary cost per full-time equivalent student for each level is calculated as follows: the instructional salary for each rank is assigned by level according to the percentage distribution of the course (assigned) credits within each rank. The salary for each rank is summed by level and divided by total full-time equivalent students for that level. For individual instruction, one course (assigned) credit is attributed to every three student credit hours generated.

2. Doctor's level includes only Indiana University and/or Slippery Rock University.

SOURCE: Data provided by the individual State-owned universities, 2000; CIP classifications - U.S. Department of Education, National Center for Education Statistics, *Classification of Instructional Programs*, 1991.

Table 9

AVERAGE CLASS SIZES IN CLASSROOM INSTRUCTION BY ACADEMIC DIVISION AND LEVEL¹
 1999-00, CHANGE FROM 1998-99 AND FIVE-YEAR AVERAGE ANNUAL RATE OF CHANGE (1994-95 to 1999-00)

University	Undergraduate									Master's		
	Lower division			Upper division			Total undergraduate			Percentage change		
	Class size	One-year	Five-year average	Class size	One-year	Five-year average	Class size	One-year	Five-year average	Class size	One-year	Five-year average
State-related												
Lincoln	20	0%	0%	13	0%	0%	18	0%	0%	14	0%	0%
Penn State	29	-6	-1	27	0	1	28	-3	-1	14	-7	0
Pittsburgh	31	0	1	23	0	-1	28	0	1	17	0	-1
Temple	26	4	0	22	0	0	23	-4	-1	14	0	-1
Total	29	-3	0	25	0	1	27	-4	0	15	0	-1
State-owned												
Bloomsburg	27	0	3	19	0	4	24	0	4	12	0	2
California	29	0	-1	17	6	-1	24	4	-1	11	-8	-4
Cheyney ²	19	--	0	12	--	0	17	--	1	19	--	5
Clarion	34	3	1	15	0	0	25	0	1	11	0	0
East Stroudsburg	28	0	0	18	0	0	24	0	0	16	-6	-3
Edinboro	26	8	0	18	6	1	23	10	1	9	0	-2
Indiana	28	-3	-1	14	8	-1	21	0	-1	8	0	-4
Kutztown	30	3	1	15	-6	0	23	5	1	14	0	3
Lock Haven	29	0	1	18	-14	1	25	-4	1	14	17	-1
Mansfield	26	-7	0	17	0	23	22	-4	11	14	17	15
Millersville	25	0	0	19	-5	0	23	0	0	18	20	8
Shippensburg	29	0	1	21	-5	5	26	-4	3	13	-7	-1
Slippery Rock	31	0	1	16	7	0	25	4	1	11	-15	a
West Chester	25	4	2	15	7	1	20	0	1	11	0	2
Total	28	0	1	16	0	1	23	0	1	12	0	0
All universities	28	-3	0	20	0	0	25	0	1	14	0	0

1. Average class size for each level is calculated by dividing total classroom student credit hours by total classroom course (assigned) credits.

2. No data for Cheyney University for 1998-99.

a. The master's level includes the doctor's level prior to 1996-97.

SOURCE: Data provided by the individual universities, 1995 to 2000.

Table 10

ACADEMIC YEAR TUITION AND REQUIRED FEES FOR FULL-TIME STUDENTS BY ACADEMIC LEVEL AND RESIDENCE
1999-00, CHANGE FROM 1998-99 AND FIVE-YEAR AVERAGE ANNUAL RATE OF CHANGE (1994-95 to 1999-00)

University	Undergraduate						Graduate ¹					
	In-State			Out-of-State			In-State			Out-of-State		
	Tuition and required fees	Percentage change		Tuition and required fees	Percentage change		Tuition and required fees	Percentage change		Tuition and required fees	Percentage change	
	One-year	Five-year average	One-year	One-year	Five-year average	One-year	One-year	Five-year average	One-year	One-year	Five-year average	
State-related												
Lincoln	\$4,824	5%	8%	\$7,716	7%	7%	\$6,122	5%	5%	\$10,280	7%	7%
Penn State ²	6,436	6	6	13,552	5	5	7,160	6	5	14,392	5	5
Pittsburgh ²	6,698	4	5	14,014	4	5	8,818	4	5	17,648	4	5
Temple	6,612	4	4	11,730	3	3	8,320	4	6	11,344	4	5
Average	6,143	5	5	11,753	4	5	7,605	4	5	13,416	5	5
State-owned												
Bloomsburg	4,456	4	4	9,884	3	3	4,466	8	5	7,296	6	4
California	4,742	4	4	10,170	3	3	4,794	8	5	7,624	6	4
Cheyney	4,173	4	3	9,601	2	3	4,160	8	4	6,990	6	4
Clarion	4,700	3	4	6,510	-27	-5	4,762	7	5	7,592	5	4
East Stroudsburg	4,492	4	3	9,920	3	3	4,504	8	4	7,334	6	4
Edinboro	4,358	4	4	6,168	-39	-5	4,725	8	6	7,555	a	5
Indiana	4,419	4	4	9,847	3	3	4,447	8	5	7,277	5	4
Kutztown	4,448	5	4	9,876	3	3	4,480	9	5	7,310	6	4
Lock Haven	4,259	5	3	7,687	4	-3	4,434	9	4	7,264	5	3
Mansfield	4,560	3	5	9,988	2	4	4,322	8	5	7,152	6	4
Millersville	4,595	4	3	10,023	2	3	4,757	7	4	7,587	5	4
Shippensburg	4,550	5	4	9,978	3	3	4,472	8	4	7,302	6	4
Slippery Rock	4,484	4	3	9,912	3	3	4,851	8	5	7,681	a	4
West Chester	4,422	4	4	9,850	3	3	4,464	8	5	7,294	6	4
Average	4,476	4	4	9,244	-2	2	4,546	8	5	7,376	5	4

1. Excludes first-professional level.

2. Main campus data only.

a. Rounds to less than 1 percent.

SOURCE: Pennsylvania Department of Education, *Colleges and Universities-Basic Student Charges*, 1994-95 and 1995-96; Pennsylvania Department of Education, *Colleges and Universities-Education Digest*, 1996-97 to 1999-00.

Table 11

TUITION AND FEE REVENUES RELATED TO FULL-TIME EQUIVALENT STUDENTS¹
 1999-00, CHANGE FROM 1998-99 AND FIVE-YEAR AVERAGE ANNUAL RATE OF CHANGE (1994-95 to 1999-00)

University	Total tuition and fee revenues			Tuition and fee revenues per FTE student			
	Amount (000s)	Percentage change		Amount	One-year change	Percentage change	
		One- year	Five-year average			One- year	Five-year average
State-related							
Lincoln	\$13,753	2%	19%	\$6,780	\$260	4%	7%
Penn State	514,994	3	7	7,440	220	3	4
Pittsburgh	262,985	3	5	8,900	200	2	4
Temple	214,754	10	5	8,890	470	6	6
Total	1,006,486	5	6	8,050	260	3	4
State-owned							
Bloomsburg	34,618	5	5	4,670	150	3	4
California	24,792	4	2	4,530	150	3	3
Cheyney	7,579	17	8	5,300	300	6	5
Clarion	25,140	6	5	4,330	160	4	3
East Stroudsburg	28,755	3	4	5,170	210	4	3
Edinboro	29,770	4	1	4,580	210	5	3
Indiana	63,684	2	4	5,020	200	4	4
Kutztown	34,546	7	5	4,820	160	3	4
Lock Haven	16,413	8	3	4,440	220	5	2
Mansfield	13,613	5	3	4,850	-20	a	3
Millersville	32,532	1	2	4,740	40	1	1
Shippensburg	28,077	3	4	4,650	210	5	3
Slippery Rock	30,432	5	1	4,580	190	4	3
West Chester	54,829	11	7	5,090	370	8	4
Total	424,780	5	4	4,780	190	4	3
All universities	1,431,266	5	6	6,690	230	4	4

1. Tuition and fee revenues are based on collections by the individual universities. FTE students include in-State and out-of-State undergraduate and graduate students. Excludes medical school data.

a. Rounds to less than 1 percent.

SOURCE: Tuition and fee revenues - data provided by the individual State-related universities and the State System of Higher Education, Commonwealth of Pennsylvania, 1995 to 2000; FTE students - data provided by the individual universities, 1995 to 2000.

Table 12

COMMONWEALTH INSTRUCTIONAL APPROPRIATIONS RELATED TO FULL-TIME EQUIVALENT STUDENTS¹
 1999-00, CHANGE FROM 1998-99 AND FIVE-YEAR AVERAGE ANNUAL RATE OF CHANGE (1994-95 to 1999-00)

University	Total instructional appropriations			Instructional appropriations per FTE student			
	Amount (000s)	Percentage change		Amount	One-year change	Percentage change	
		One- year	Five-year average			One- year	Five-year average
State-related							
Lincoln	\$11,358	3%	4%	\$5,600	\$280	5%	-3%
Penn State	236,218	3	3	3,410	90	3	a
Pittsburgh	149,522	6	3	5,060	240	5	2
Temple	152,348	3	3	6,310	-40	-1	4
Total	549,446	4	3	4,400	120	3	1
State-owned							
Bloomsburg	32,578	3	2	4,400	70	2	1
California	29,812	3	3	5,450	120	2	5
Cheyney	14,631	6	3	10,220	-480	-4	1
Clarion	30,817	3	3	5,310	50	1	1
East Stroudsburg	23,889	4	2	4,300	210	5	1
Edinboro	31,939	2	3	4,910	120	3	5
Indiana	58,807	a	2	4,640	120	3	2
Kutztown	31,476	3	2	4,400	10	a	1
Lock Haven	20,031	6	5	5,420	160	3	3
Mansfield	18,551	5	4	6,610	-40	-1	4
Millersville	32,826	1	2	4,780	70	1	2
Shippensburg	30,797	6	4	5,100	360	8	3
Slippery Rock	32,890	1	2	4,950	10	a	3
West Chester	43,802	8	1	4,070	180	5	-1
Total ²	432,846	3	3	4,870	110	2	2
All universities ²	982,292	4	3	4,590	110	2	2

1. Instructional appropriations include educational and general appropriations and, for 1994-95 and 1995-96, Tuition Challenge Grants. FTE students include in-State and out-of-State undergraduate and graduate students. Excludes medical school data.

2. Excludes amount of instructional appropriations allocated to Office of the Chancellor and the System Reserve of the State System of Higher Education.

a. Rounds to less than 1 percent.

SOURCE: Instructional appropriations - *Governor's Executive Budget*, 1996-97 to 2000-01; data provided by the individual State-related universities and the State System of Higher Education, Commonwealth of Pennsylvania, 1995 to 2000. FTE students - data provided by the individual universities, 1995 to 2000.

Table 13

TUITION AND FEE REVENUES, COMMONWEALTH INSTRUCTIONAL APPROPRIATIONS AND STUDENT AID
RELATED TO FULL-TIME EQUIVALENT STUDENTS¹
1999-00, CHANGE FROM 1998-99 AND FIVE-YEAR AVERAGE ANNUAL RATE OF CHANGE (1994-95 to 1999-00)

University	Per FTE student			Ratio of instructional appropriations to total instructional revenues			Student aid per FTE student ²
	Tuition and fee revenues	Instructional appropriations	Total instructional revenues	Percentage	Percentage change One- Five-year year average		
State-related							
Lincoln	\$6,780	\$5,600	\$12,380	45%	0	-4%	\$505
Penn State	7,440	3,410	10,850	31	0	-3	577
Pittsburgh	8,900	5,060	13,960	36	0	-1	610
Temple	8,890	6,310	15,200	42	-2%	-1	501
Total	8,050	4,400	12,450	35	0	-2	569
State-owned							
Bloomsburg	4,670	4,400	9,070	49	0	-1	627
California	4,530	5,450	9,980	55	0	1	715
Cheyney	5,300	10,220	15,520	66	-3	-1	687
Clarion	4,330	5,310	9,640	55	-2	-1	795
East Stroudsburg	5,170	4,300	9,470	45	0	-1	504
Edinboro	4,580	4,910	9,490	52	0	1	756
Indiana	5,020	4,640	9,660	48	0	-1	744
Kutztown	4,820	4,400	9,220	48	-2	-1	501
Lock Haven	4,440	5,420	9,860	55	0	1	727
Mansfield	4,850	6,610	11,460	58	0	1	735
Millersville	4,740	4,780	9,520	50	0	0	573
Shippensburg	4,650	5,100	9,750	52	0	0	603
Slippery Rock	4,580	4,950	9,530	52	-2	a	690
West Chester	5,090	4,070	9,160	44	-2	-2	449
Total ³	4,780	4,870	9,650	50	-2	-1	637
All universities ³	6,690	4,590	11,280	41	0	-1	597

1. Tuition and fee revenues are based on collections by the individual universities. Instructional appropriations include educational and general appropriations and, for 1994-95 and 1995-96, Tuition Challenge Grants. FTE students include in-State and out-of-State undergraduate and graduate students. Excludes medical school data.

2. Includes grants and matching funds. Does not include student loans.

3. Instructional appropriations exclude amount allocated to Office of the Chancellor and the System Reserve of the State System of Higher Education.

SOURCE: Tuition and fee revenues - data provided by the individual State-related universities and the State System of Higher Education, Commonwealth of Pennsylvania, 1995 to 2000; instructional appropriations - *Governor's Executive Budget*, 1996-97 to 2000-01; data provided by the individual State-related universities and the State System of Higher Education, Commonwealth of Pennsylvania, 1995 to 2000; FTE students - data provided by the individual universities, 1995 to 2000; student aid - data provided by the Pennsylvania Higher Education Assistance Agency, December 2000.

page 24 blank

II. HISTORICAL DATA

page 26 blank

Historical Table 1

FULL-TIME EQUIVALENT STUDENTS BY ACADEMIC LEVEL¹
1994-95 to 1999-00

University	1994-95	1995-96	1996-97	1997-98	1998-99	1999-00
State-related						
Lincoln						
Total	1,416	1,546	1,865	2,064	2,075	2,028
Undergraduate	1,217	1,317	1,573	1,641	1,599	1,515
Graduate	199	229	292	423	476	513
Penn State						
Total	61,082	64,137	65,811	67,456	69,061	69,227
Undergraduate	54,725	57,601	59,317	61,110	62,808	62,954
Graduate	6,357	6,536	6,494	6,346	6,253	6,273
Pittsburgh						
Total	28,290	27,565	27,738	28,489	29,222	29,563
Undergraduate	20,478	20,040	19,929	20,457	21,336	21,756
Graduate	7,812	7,525	7,809	8,032	7,886	7,807
Temple						
Total	25,078	24,399	23,455	22,989	23,286	24,162
Undergraduate	18,087	17,711	16,939	16,643	16,326	16,908
Graduate	6,991	6,688	6,516	6,346	6,960	7,254
State-owned						
Bloomsburg						
Total	7,040	7,026	7,225	7,338	7,322	7,408
Undergraduate	6,628	6,582	6,793	6,902	6,851	6,924
Graduate	412	444	432	436	471	484
California						
Total	5,733	5,547	5,226	5,422	5,439	5,468
Undergraduate	4,982	4,690	4,473	4,654	4,646	4,735
Graduate	751	857	753	768	793	733
Cheyney						
Total	1,278	1,303	1,293	1,313	1,293	1,431
Undergraduate	1,084	1,099	1,079	1,025	969	987
Graduate	194	204	214	288	324	444
Clarion						
Total	5,409	5,534	5,605	5,695	5,680	5,803
Undergraduate	5,133	5,234	5,300	5,416	5,425	5,509
Graduate	276	300	305	279	255	294
East Stroudsburg						
Total	5,317	5,263	5,325	5,514	5,608	5,561
Undergraduate	4,655	4,597	4,704	4,857	4,912	4,881
Graduate	662	666	621	657	696	680
Edinboro						
Total	6,971	6,840	6,678	6,525	6,541	6,504
Undergraduate	6,556	6,393	6,258	6,132	6,138	6,092
Graduate	415	447	420	393	403	412
Indiana						
Total	12,841	12,764	12,859	12,954	12,997	12,680
Undergraduate	11,795	11,729	11,739	11,805	11,851	11,583
Graduate	1,046	1,035	1,120	1,149	1,146	1,097
Kutztown						
Total	6,909	6,758	6,791	6,892	6,933	7,162
Undergraduate	6,485	6,326	6,383	6,461	6,489	6,696
Graduate	424	432	408	431	444	466
Lock Haven						
Total	3,431	3,243	3,283	3,403	3,590	3,696
Undergraduate	3,413	3,236	3,223	3,300	3,472	3,529
Graduate	18	7	60	103	118	167
Mansfield						
Total	2,893	2,810	2,801	2,757	2,663	2,808
Undergraduate	2,744	2,658	2,653	2,620	2,556	2,700
Graduate	149	152	148	137	107	108
Millersville						
Total	6,711	6,920	6,842	6,944	6,877	6,866
Undergraduate	5,957	6,100	6,046	6,130	6,042	5,994
Graduate	754	820	796	814	835	872
Shippensburg						
Total	5,950	5,989	6,057	6,089	6,110	6,038
Undergraduate	5,449	5,459	5,519	5,561	5,580	5,556
Graduate	501	530	538	528	530	482
Slippery Rock						
Total	7,005	6,908	6,717	6,667	6,584	6,646
Undergraduate	6,382	6,317	6,130	6,066	5,946	6,024
Graduate	623	591	587	601	638	622
West Chester						
Total	9,502	9,578	9,724	10,055	10,417	10,771
Undergraduate	8,565	8,653	8,765	9,021	9,420	9,757
Graduate	937	925	959	1,034	997	1,014

1. Data for each year represent the summer term preceding the academic year plus the academic year. Full-time equivalent students are calculated by dividing undergraduate student credit hours by 30 and graduate student credit hours by 24. In addition to master's level, graduate for Penn State, Pittsburgh, Temple, Indiana and Slippery Rock includes first-professional (excluding medical schools) and/or doctor's levels.

SOURCE: Data provided by the individual universities, 1995 to 2000.

Historical Table 2

STUDENT CREDIT HOURS BY ACADEMIC DIVISION AND LEVEL¹
 TOTAL YEAR AND SUMMER 1994-95 to 1999-00
 (in thousands)

University	Total year							Summer			
	Lower division	Upper division	Total under-graduate	Master's	First professional	Doctor's	Total graduate	Grand total	Total under-graduate	Total graduate	Grand total
State-related											
Lincoln											
1994-95	26	10	36	5	na	na	5	41	1	1	2
1995-96	30	10	40	6	na	na	6	46	2	1	3
1996-97	37	10	47	7	na	na	7	54	2	1	3
1997-98	38	11	49	10	na	na	10	59	2	1	3
1998-99	37	11	48	11	na	na	11	59	2	1	3
1999-00	33	13	46	12	na	na	12	58	1	2	3
Penn State											
1994-95	1,040	601	1,641	85	na	68	153	1,794	101	21	122
1995-96	1,131	597	1,728	90	na	67	157	1,885	103	23	126
1996-97	1,171	608	1,779	89	na	67	156	1,935	107	23	130
1997-98	1,160	673	1,833	85	na	67	152	1,985	108	23	131
1998-99	1,166	718	1,884	77	na	73	150	2,034	110	21	131
1999-00	1,141	748	1,889	79	na	71	150	2,039	108	19	127
Pittsburgh											
1994-95	405	209	614	128	38	22	188	802	52	34	86
1995-96	398	203	601	120	39	22	181	782	49	30	79
1996-97	403	195	598	123	43	22	188	786	47	34	81
1997-98	421	192	613	126	45	22	193	806	47	35	82
1998-99	439	201	640	119	49	21	189	829	46	35	81
1999-00	448	205	653	116	52	20	188	841	44	34	78
Temple											
1994-95	261	282	543	90	56	22	168	711	52	22	74
1995-96	251	280	531	86	54	20	160	691	52	22	74
1996-97	233	275	508	85	53	18	156	664	48	21	69
1997-98	223	276	499	83	52	17	152	651	47	21	68
1998-99	215	275	490	82	69	16	167	657	47	20	67
1999-00	231	276	507	82	76	16	174	681	46	22	68
State-owned											
Bloomsburg											
1994-95	136	63	199	10	na	na	10	209	17	3	20
1995-96	137	61	198	11	na	na	11	209	18	4	22
1996-97	146	58	204	10	na	na	10	214	16	4	20
1997-98	147	60	207	10	na	na	10	217	17	4	21
1998-99	145	60	205	11	na	na	11	216	17	4	21
1999-00	144	63	207	12	na	na	12	219	18	4	22
California											
1994-95	103	46	149	18	na	na	18	167	7	5	12
1995-96	100	41	141	21	na	na	21	162	7	5	12
1996-97	89	45	134	18	na	na	18	152	7	5	12
1997-98	95	45	140	18	na	na	18	158	7	5	12
1998-99	95	44	139	19	na	na	19	158	7	6	13
1999-00	97	45	142	18	na	na	18	160	7	5	12
Cheyney											
1994-95	23	9	32	5	na	na	5	37	a	1	1
1995-96	24	9	33	5	na	na	5	38	1	1	2
1996-97	23	9	32	5	na	na	5	37	1	1	2
1997-98	22	9	31	7	na	na	7	38	1	1	2
1998-99	20	9	29	8	na	na	8	37	1	a	1
1999-00	22	8	30	11	na	na	11	41	1	2	3
Clarion											
1994-95	108	46	154	7	na	na	7	161	9	2	11
1995-96	111	46	157	7	na	na	7	164	9	2	11
1996-97	115	44	159	7	na	na	7	166	9	2	11
1997-98	117	45	162	7	na	na	7	169	9	2	11
1998-99	119	44	163	6	na	na	6	169	10	1	11
1999-00	119	47	166	7	na	na	7	173	10	2	12
East Stroudsburg											
1994-95	98	42	140	16	na	na	16	156	12	6	18
1995-96	101	37	138	16	na	na	16	154	13	7	20
1996-97	100	41	141	15	na	na	15	156	12	6	18
1997-98	103	43	146	16	na	na	16	162	12	6	18
1998-99	103	44	147	17	na	na	17	164	13	7	20
1999-00	102	45	147	16	na	na	16	163	13	6	19

Edinboro												
1994-95	135	62	197	10	na	na	10	207	12	2	14	
1995-96	129	63	192	11	na	na	11	203	11	3	14	
1996-97	123	64	187	10	na	na	10	197	12	2	14	
1997-98	121	63	184	9	na	na	9	193	12	2	14	
1998-99	121	63	184	10	na	na	10	194	12	2	14	
1999-00	120	63	183	10	na	na	10	193	12	2	14	
Indiana												
1994-95	239	115	354	20	na	5	25	379	27	7	34	
1995-96	242	110	352	20	na	5	25	377	26	7	33	
1996-97	243	109	352	20	na	7	27	379	25	8	33	
1997-98	244	110	354	21	na	7	28	382	26	8	34	
1998-99	244	112	356	21	na	6	27	383	26	8	34	
1999-00	236	111	347	21	na	6	27	374	27	8	35	
Kutztown												
1994-95	128	66	194	10	na	na	10	204	9	3	12	
1995-96	125	65	190	10	na	na	10	200	8	3	11	
1996-97	125	66	191	10	na	na	10	201	7	3	10	
1997-98	128	66	194	10	na	na	10	204	7	3	10	
1998-99	128	67	195	11	na	na	11	206	8	3	11	
1999-00	133	67	200	11	na	na	11	211	8	3	11	
Lock Haven												
1994-95	71	31	102	a	na	na	a	102	5	a	5	
1995-96	67	30	97	a	na	na	a	97	5	a	5	
1996-97	67	30	97	1	na	na	1	98	5	a	5	
1997-98	68	31	99	2	na	na	2	101	6	1	7	
1998-99	70	35	105	3	na	na	3	108	6	1	7	
1999-00	75	31	106	4	na	na	4	110	7	1	8	
Mansfield												
1994-95	51	31	82	4	na	na	4	86	5	1	6	
1995-96	48	31	79	4	na	na	4	83	5	1	6	
1996-97	48	32	80	3	na	na	3	83	5	1	6	
1997-98	48	31	79	3	na	na	3	82	5	1	6	
1998-99	47	30	77	3	na	na	3	80	5	1	6	
1999-00	49	32	81	3	na	na	3	84	4	1	5	
Millersville												
1994-95	114	64	178	18	na	na	18	196	13	11	24	
1995-96	116	67	183	20	na	na	20	203	13	13	26	
1996-97	115	66	181	19	na	na	19	200	13	11	24	
1997-98	116	68	184	19	na	na	19	203	13	11	24	
1998-99	116	65	181	20	na	na	20	201	11	12	23	
1999-00	116	64	180	21	na	na	21	201	10	13	23	
Shippensburg												
1994-95	117	46	163	12	na	na	12	175	7	4	11	
1995-96	118	46	164	13	na	na	13	177	8	4	12	
1996-97	121	45	166	13	na	na	13	179	8	4	12	
1997-98	119	48	167	13	na	na	13	180	7	4	11	
1998-99	117	50	167	13	na	na	13	180	7	4	11	
1999-00	118	49	167	12	na	na	12	179	8	3	11	
Slippery Rock												
1994-95	135	56	191	15	na	b	15	206	14	3	17	
1995-96	133	56	189	14	na	b	14	203	14	4	18	
1996-97	128	56	184	9	na	5	14	198	13	3	16	
1997-98	127	55	182	9	na	6	15	197	13	3	16	
1998-99	126	53	179	9	na	6	15	194	13	3	16	
1999-00	127	53	180	9	na	6	15	195	13	4	17	
West Chester												
1994-95	165	92	257	22	na	na	22	279	19	6	25	
1995-96	169	91	260	22	na	na	22	282	20	6	26	
1996-97	174	89	263	23	na	na	23	286	20	6	26	
1997-98	184	87	271	25	na	na	25	296	20	7	27	
1998-99	192	90	282	24	na	na	24	306	24	7	31	
1999-00	197	96	293	24	na	na	24	317	26	7	33	

1. Data for each year represent the summer term preceding the academic year plus the academic year. The first-professional level excludes medical school data.

a. Rounds to less than one thousand student credit hours.

b. Included in master's level.

na. Not applicable.

SOURCE: Data provided by the individual universities, 1995 to 2000.

Historical Table 3

DEGREES CONFERRED¹
1994-95 to 1999-00

University	1994-95	1995-96	1996-97	1997-98	1998-99	1999-00
State-related						
Lincoln						
Total	298	310	328	318	364	501
Bachelor's	224	240	219	185	194	285
Graduate	74	70	109	133	170	216
Penn State						
Total	11,292	11,049	11,484	11,686	12,583	13,150
Bachelor's	8,981	8,716	8,993	9,059	10,044	10,585
Graduate	2,311	2,333	2,491	2,627	2,539	2,565
Pittsburgh						
Total	6,993	6,543	6,668	6,514	6,533	6,578
Bachelor's	4,020	3,885	3,962	3,854	3,784	3,915
Graduate	2,973	2,658	2,706	2,660	2,749	2,663
Temple						
Total	5,768	5,538	5,472	5,534	5,497	5,519
Bachelor's	3,299	3,162	3,070	3,212	3,135	3,164
Graduate	2,469	2,376	2,402	2,322	2,362	2,355
State-owned						
Bloomsburg						
Total	1,543	1,553	1,469	1,464	1,431	1,537
Bachelor's	1,354	1,323	1,231	1,239	1,196	1,316
Graduate	189	230	238	225	235	221
California						
Total	1,133	1,235	1,255	1,238	1,260	1,110
Bachelor's	865	911	906	921	929	809
Graduate	268	324	349	317	331	301
Cheyney						
Total	268	223	263	274	258	350
Bachelor's	189	132	147	178	127	152
Graduate	79	91	116	96	131	198
Clarion						
Total	1,025	1,039	1,004	1,010	925	1,041
Bachelor's	858	890	863	850	774	888
Graduate	167	149	141	160	151	153
East Stroudsburg						
Total	1,075	1,068	1,034	1,047	1,038	1,128
Bachelor's	852	824	788	821	799	902
Graduate	223	244	246	226	239	226
Edinboro						
Total	1,401	1,312	1,298	1,251	1,142	1,283
Bachelor's	1,191	1,131	1,094	1,066	1,010	1,138
Graduate	210	181	204	185	132	145
Indiana						
Total	2,591	2,656	2,446	2,604	2,604	2,713
Bachelor's	2,116	2,110	1,956	2,060	2,063	2,119
Graduate	475	546	490	544	541	594
Kutztown						
Total	1,351	1,310	1,362	1,313	1,366	1,504
Bachelor's	1,154	1,086	1,147	1,111	1,138	1,237
Graduate	197	224	215	202	228	267
Lock Haven						
Total	625	584	586	582	660	645
Bachelor's	624	582	583	557	638	609
Graduate	1	2	3	25	22	36
Mansfield						
Total	611	528	581	540	570	513
Bachelor's	538	467	490	456	508	461
Graduate	73	61	91	84	62	52
Millersville						
Total	1,367	1,380	1,398	1,439	1,451	1,383
Bachelor's	1,215	1,229	1,219	1,257	1,268	1,212
Graduate	152	151	179	182	183	171
Shippensburg						
Total	1,435	1,422	1,471	1,420	1,488	1,390
Bachelor's	1,114	1,139	1,161	1,107	1,179	1,124
Graduate	321	283	310	313	309	266
Slippery Rock						
Total	1,381	1,362	1,366	1,256	1,342	1,245
Bachelor's	1,195	1,151	1,153	1,095	1,145	1,062
Graduate	186	211	213	161	197	183
West Chester						
Total	2,001	1,877	1,841	1,903	1,990	2,150
Bachelor's	1,620	1,492	1,489	1,509	1,559	1,731
Graduate	381	385	352	394	431	419

1. Data for each year represent the summer term preceding the academic year plus the academic year. Graduate include master's at all universities, first professional (excluding medical schools) at Pittsburgh and Temple, and doctor's at Penn State, Pittsburgh, Temple, Indiana and Slippery Rock.

SOURCE: Data provided by the individual universities, 1995 to 2000.

Historical Table 4

NUMBER AND AVERAGE WEEKLY STUDENT CONTACT HOURS OF FULL-TIME EMPLOYED FACULTY BY ACADEMIC LEVEL¹
FALL 1994 to FALL 1999

University	Full-time employed faculty ²						Undergraduate average weekly student contact hours						Graduate average weekly student contact hours					
	1994	1995	1996	1997	1998	1999	1994	1995	1996	1997	1998	1999	1994	1995	1996	1997	1998	1999
	<hr/>																	
State-related																		
Lincoln	83	81	86	94	93	93	9.9	9.7	10.3	10.4	10.7	11.6	.9	.8	.9	.9	.9	0.7
Penn State	2,943	3,000	3,026	2,975	3,096	3,178	6.7	6.6	6.7	6.8	6.4	6.6	1.8	1.8	1.8	1.7	1.7	1.7
Pittsburgh	1,770	1,721	1,733	1,780	1,782	1,731	4.4	4.8	4.4	4.4	4.5	4.4	4.0	4.2	4.0	3.8	3.7	3.7
Temple	1,137	1,088	1,078	1,033	1,025	1,045	5.0	5.3	5.6	5.4	5.5	5.6	4.0	4.0	3.9	3.7	4.1	3.9
Total	5,933	5,890	5,923	5,882	5,996	6,047	5.7	5.9	5.9	5.9	5.7	5.9	2.9	2.9	2.8	2.6	2.7	2.6
State-owned																		
Bloomsburg	355	366	368	372	370	360	11.4	11.1	11.3	11.2	11.0	11.2	.9	.8	.8	.8	.9	0.9
California	279	286	259	257	267	261	10.0	10.2	10.0	10.5	10.0	10.1	1.6	1.6	1.6	1.7	1.7	1.5
Cheyney ³	92	90	91	87	87	90	10.2	10.5	11.0	11.0	11.0	11.1	1.0	1.3	1.0	1.0	1.0	1.5
Clarion	340	346	340	339	339	324	11.2	10.5	10.9	10.5	11.1	10.8	.7	.9	.8	.8	.8	0.9
East Stroudsburg	258	263	251	246	250	256	10.9	10.9	10.9	11.2	11.0	10.7	1.1	1.0	1.1	1.1	1.2	1.1
Edinboro	373	363	380	345	336	341	12.8	12.8	12.8	13.2	13.1	12.2	.8	.9	.9	1.0	1.0	1.2
Indiana	712	715	720	726	743	721	9.8	9.8	10.2	10.1	10.0	10.1	1.4	1.3	1.2	1.1	1.4	1.3
Kutztown	358	357	373	364	372	380	11.4	11.4	11.0	11.3	11.3	11.3	.5	.7	.5	.6	.6	0.6
Lock Haven	200	202	185	197	199	206	11.5	11.8	10.9	11.1	11.5	11.9	.1	.1	.1	.1	.2	0.2
Mansfield	174	176	167	161	150	149	11.2	10.6	10.6	11.1	11.0	11.2	.4	.3	.4	.1	.6	0.7
Millersville ⁴	305	332	328	324	313	317	11.6	10.3	10.1	10.6	10.6	10.6	1.0	.9	.8	.7	.8	0.9
Shippensburg	317	312	308	299	288	288	9.4	10.4	10.2	9.8	9.7	10.2	.9	1.0	.9	1.0	.9	0.8
Slippery Rock	378	378	369	371	362	359	10.8	10.4	9.9	9.4	9.7	10.0	.7	.7	.8	.8	.8	0.9
West Chester	538	541	530	543	558	566	10.8	10.6	10.6	10.3	10.4	10.1	1.5	1.5	1.5	1.5	1.6	1.6
Total	4,679	4,727	4,669	4,631	4,634	4,618	10.9	10.8	10.7	10.7	10.7	10.7	1.0	1.0	.9	.9	1.0	1.0
All universities	10,612	10,617	10,592	10,513	10,630	10,665	7.9	8.0	7.9	7.9	7.9	7.9	2.1	2.1	2.0	1.9	2.0	2.0

1. Averages calculated for the full-time employed faculty who reported complete workweeks of 100 hours or less for the fall term.
2. The number of full-time employed faculty represents those reported by each university for the fall term.
3. No data for Fall 1998; Fall 1997 data repeated.
4. In Fall 1995 there were changes in definitions and procedures used to gather workweek data making prior years noncomparable.

SOURCE: Data provided by the individual universities, 1995 to 2000.

Historical Table 5

NUMBER AND AVERAGE INSTRUCTIONAL SALARIES OF FULL-TIME EQUIVALENT INSTRUCTIONAL FACULTY BY RANK¹
 1994-95 to 1999-00
 (Dollars in thousands)

University	FTE instructional faculty	Average instructional salaries					No rank ²
		All faculty	Professor	Associate professor	Assistant professor	Instructor	
State-related							
Lincoln							
1994-95	99	\$33.0	\$47.4	\$37.8	\$29.6	\$27.1	\$25.0
1995-96	104	33.7	47.3	40.0	31.2	26.9	27.3
1996-97	121	33.2	51.8	42.2	31.0	26.1	24.3
1997-98	135	32.4	54.1	39.8	29.8	21.7	24.6
1998-99	138	34.1	55.3	42.8	32.2	22.4	26.3
1999-00	137	34.2	54.1	40.4	32.4	22.1	24.2
Penn State							
1994-95	3,395	43.9	71.5	51.6	41.7	32.5	29.5
1995-96	3,482	45.1	75.4	52.6	42.6	32.7	30.4
1996-97	3,557	45.5	76.4	53.8	43.8	31.2	30.0
1997-98	3,654	48.1	83.6	56.7	46.3	33.3	31.0
1998-99	3,754	50.0	85.4	58.6	47.9	35.8	32.6
1999-00	3,842	52.2	89.8	60.8	51.0	38.8	34.8
Pittsburgh							
1994-95	1,865	43.9	70.3	48.1	38.4	25.7	33.0
1995-96	1,907	43.8	70.6	48.4	37.6	25.1	32.9
1996-97	1,855	44.9	71.7	49.6	38.4	25.6	32.2
1997-98	1,833	47.8	75.0	52.0	41.0	28.5	33.7
1998-99	1,799	47.0	74.1	52.2	41.6	28.1	34.1
1999-00	1,811	47.6	77.7	53.3	43.4	28.4	33.7
Temple							
1994-95	1,537	42.4	66.4	51.9	40.2	20.9	20.4
1995-96	1,445	45.4	70.4	54.7	38.7	21.9	20.6
1996-97	1,426	46.0	71.3	54.9	39.3	21.4	21.9
1997-98	1,365	47.1	72.0	56.1	41.0	22.6	20.5
1998-99	1,399	48.1	76.4	57.7	41.3	25.1	21.2
1999-00	1,451	49.1	78.3	59.5	42.3	26.9	24.4
State-owned							
Bloomsburg							
1994-95	389	50.2	63.8	51.9	40.6	32.5	na
1995-96	392	52.4	66.1	53.4	42.0	31.8	61.8
1996-97	397	51.7	65.1	53.7	43.1	31.8	na
1997-98	405	52.7	67.7	54.7	42.5	31.7	na
1998-99	398	53.9	68.6	56.8	43.5	32.2	na
1999-00	403	56.0	72.1	58.5	45.7	33.6	na
California							
1994-95	284	52.7	66.0	53.2	44.1	26.4	40.9
1995-96	285	54.7	68.6	56.4	44.0	26.9	47.2
1996-97	272	54.0	66.8	53.8	43.3	22.0	49.0
1997-98	279	53.4	66.8	54.8	44.8	26.6	45.5
1998-99	282	55.8	71.1	55.7	44.6	30.7	29.8
1999-00	282	57.2	73.4	49.0	51.5	35.1	47.9
Cheyney							
1994-95	93	49.8	60.8	47.8	44.3	39.3	10.4
1995-96	96	52.9	69.2	54.1	43.1	34.0	0
1996-97	99	50.0	64.2	50.6	41.1	33.8	0
1997-98	103	51.0	63.4	54.0	45.3	33.6	na
1998-99	106	58.1	76.6	58.7	54.0	39.4	na
1999-00	105	53.8	77.3	64.3	46.0	30.3	na
Clarion							
1994-95	330	51.1	66.2	53.5	42.5	29.4	24.9
1995-96	327	53.4	68.4	56.1	43.1	32.7	na
1996-97	327	53.0	69.2	55.5	42.6	31.0	na
1997-98	326	53.9	69.4	58.0	42.6	31.8	na
1998-99	320	56.0	74.7	59.0	44.5	33.7	na
1999-00	319	55.3	74.1	57.6	44.9	33.0	50.7
East Stroudsburg							
1994-95	293	49.9	60.4	51.1	40.2	20.4	na
1995-96	302	51.5	63.4	52.5	42.0	20.2	na
1996-97 ^a	266	56.6	70.4	58.1	46.2	25.3	na
1997-98	277	55.4	68.8	59.6	44.2	25.1	na
1998-99	285	56.3	72.9	61.7	43.4	29.0	na
1999-00	286	57.4	75.9	61.8	45.1	28.9	na

Edinboro								
1994-95	409	49.9	64.5	51.4	41.3	33.9	na	
1995-96	401	51.3	65.3	51.7	43.4	34.5	19.0	
1996-97	393	51.8	67.2	54.3	43.5	36.6	na	
1997-98	387	53.1	68.9	55.6	45.2	34.1	na	
1998-99	385	54.8	71.0	56.5	46.1	35.5	na	
1999-00	400	55.4	71.0	57.5	47.3	35.1	na	
Indiana								
1994-95	726	52.3	64.9	52.6	42.5	31.6	29.2	
1995-96	701	55.3	67.9	55.2	44.5	35.3	29.8	
1996-97	729	54.0	67.2	54.7	43.0	32.5	32.9	
1997-98	742	54.4	71.2	56.4	44.0	29.5	29.5	
1998-99	763	52.1	67.5	54.1	41.2	31.8	28.2	
1999-00	834	49.1	60.0	50.1	41.7	32.9	30.8	
Kutztown								
1994-95	373	52.6	67.1	54.7	42.2	30.3	73.4	
1995-96	371	55.0	70.6	56.6	43.9	31.2	57.7	
1996-97	368	54.6	71.1	55.9	43.2	31.4	84.6	
1997-98	374	55.0	72.0	57.9	44.0	32.1	112.8	
1998-99	371	56.6	74.6	59.7	44.4	32.5	na	
1999-00	380	58.0	77.8	61.9	46.3	32.0	na	
Lock Haven								
1994-95	183	51.4	67.8	55.6	43.5	35.5	11.2	
1995-96	181	52.9	68.9	59.1	43.2	36.0	36.0	
1996-97	185	51.5	68.4	57.5	44.2	31.2	37.8	
1997-98	194	50.0	74.0	55.8	44.8	27.9	na	
1998-99	183	52.5	72.1	58.3	44.8	33.2	na	
1999-00	205	52.6	75.6	59.4	43.8	32.9	na	
Mansfield								
1994-95	184	51.4	67.7	55.0	44.1	30.0	na	
1995-96	177	54.6	70.6	57.5	45.2	30.3	na	
1996-97	175	54.8	70.7	55.3	45.2	30.9	na	
1997-98	171	51.7	68.5	51.1	41.7	28.1	na	
1998-99	172	54.3	70.1	58.0	45.1	26.3	94.4	
1999-00	166	59.0	79.4	60.6	48.5	31.2	11.4	
Millersville								
1994-95	394	50.9	63.8	53.4	41.5	28.7	na	
1995-96	407	51.7	65.9	53.7	41.6	29.8	na	
1996-97	397	52.2	66.5	54.2	41.3	29.8	na	
1997-98	406	52.7	67.4	55.5	42.4	29.8	na	
1998-99	406	53.7	70.0	57.1	43.3	30.9	na	
1999-00	406	55.3	71.9	58.5	44.9	31.1	na	
Shippensburg								
1994-95	307	55.9	67.8	55.4	42.4	31.6	na	
1995-96	309	57.6	70.1	58.3	44.2	32.4	na	
1996-97	308	56.8	69.7	57.1	44.6	33.4	na	
1997-98	308	56.2	71.6	58.5	43.8	25.6	0	
1998-99	300	57.4	73.2	60.9	46.0	28.8	na	
1999-00	306	57.3	75.2	63.5	47.8	33.4	37.6	
Slippery Rock								
1994-95	380	52.8	64.9	51.9	42.7	35.3	92.2	
1995-96	371	54.5	67.1	54.7	44.2	36.0	0	
1996-97	360	56.5	70.3	57.7	45.5	36.7	na	
1997-98	358	57.1	68.8	60.6	47.1	38.9	0	
1998-99	352	57.7	71.6	56.7	49.1	40.3	na	
1999-00	351	57.4	71.4	57.7	48.2	39.7	85.1	
West Chester								
1994-95	560	49.0	64.4	54.7	43.1	29.4	28.4	
1995-96	577	50.0	67.1	55.1	44.3	30.1	34.4	
1996-97	575	49.4	67.0	55.0	43.8	29.7	35.5	
1997-98	591	49.9	68.0	55.8	45.4	29.7	33.0	
1998-99	610	50.3	69.7	57.3	45.9	30.2	36.9	
1999-00	629	51.0	71.0	58.5	46.6	31.4	34.5	

1. Average instructional salaries are calculated by dividing the total instructional salaries paid to all staff members in the respective ranks by their total full-time equivalency in the instructional function. One full-time equivalent faculty represents one full-time workload for two terms (one academic year). The summer term is treated as one term or one-half of the academic year. Data for each year represent the summer term preceding the academic year plus the academic year.

2. The full-time equivalency of nonranked faculty members is based on the time spent in instruction by all nonranked personnel, including lecturers, administrators, librarians, research staff, graduate assistants and volunteers.

a. FTE instructional faculty and average instructional salaries reflect a correction in the computational method used for determining full-time equivalent instructional faculty.

na. Not applicable.

SOURCE: Data provided by the individual universities, 1995 to 2000.

Historical Table 6

AVERAGE INSTRUCTIONAL FACULTY SALARY COST PER FULL-TIME EQUIVALENT STUDENT BY ACADEMIC DIVISION AND LEVEL¹
1994-95 to 1999-00

University	Lower division						Upper division						Total undergraduate					Masters							
	1994-95	1995-96	1996-97	1997-98	1998-99	1999-00	1994-95	1995-96	1996-97	1997-98	1998-99	1999-00	1994-95	1995-96	1996-97	1997-98	1998-99	1999-00	1994-95	1995-96	1996-97	1997-98	1998-99		
State-related																									
Lincoln	\$2,028	\$1,910	\$1,773	\$1,773	\$2,098	\$2,133	\$3,268	\$3,573	\$3,865	\$3,738	\$3,381	\$3,376	\$2,367	\$2,323	\$2,214	\$2,205	\$2,395	\$2,475	\$1,928	\$1,893	\$1,857	\$1,767	\$1,820	\$1,787	
Penn State	1,488	1,454	1,456	1,519	1,590	1,759	2,600	2,691	2,731	2,816	2,947	3,056	1,895	1,881	1,892	1,995	2,107	2,272	4,156	4,218	4,532	5,048	4,888	5,281	
Pittsburgh	1,567	1,709	1,686	1,724	1,628	1,580	3,025	2,964	3,124	3,359	3,109	3,206	2,063	2,132	2,154	2,237	2,093	2,090	4,769	5,213	5,126	5,287	5,229	5,320	
Temple	1,656	1,733	1,906	1,939	2,002	1,998	2,470	2,533	2,605	2,603	2,759	2,924	2,079	2,155	2,284	2,307	2,427	2,502	3,198	3,392	3,347	3,280	3,666	3,757	
Total	1,540	1,556	1,569	1,622	1,655	1,751	2,653	2,709	2,780	2,864	2,931	3,051	1,973	1,990	2,019	2,100	2,157	2,272	4,096	4,336	4,379	4,556	4,563	4,718	
State-owned																									
Bloomsburg	2,243	2,298	2,215	2,221	2,284	2,369	3,747	4,069	4,120	4,226	4,162	4,261	2,717	2,843	2,754	2,798	2,834	2,945	3,763	4,062	4,227	4,688	4,283	4,519	
California	2,041	2,243	2,235	2,207	2,199	2,242	3,488	3,872	3,571	3,626	3,979	3,875	2,491	2,713	2,685	2,660	2,768	2,755	3,422	3,353	3,613	3,312	3,835	4,164	
Cheyney	3,206	3,349	3,382	3,674	nd	4,283	5,172	5,977	5,285	6,165	nd	6,246	3,776	4,057	3,941	4,388	nd	4,806	2,892	3,036	3,319	2,659	nd	2,058	
Clarion	2,308	2,351	2,276	2,259	2,386	2,215	4,610	4,760	4,761	4,769	4,846	4,789	2,997	3,062	2,966	2,961	3,054	2,939	5,347	4,907	5,003	5,496	5,374	4,914	
East Stroudsburg	2,251	2,438	2,254	2,300	2,344	2,377	3,963	4,305	4,241	3,972	4,188	4,257	2,760	2,937	2,835	2,789	2,899	2,951	2,649	3,066	2,755	2,729	2,589	2,966	
Edinboro	2,288	2,354	2,361	2,453	2,556	2,546	4,001	4,113	3,990	4,176	4,196	4,657	2,826	2,934	2,920	3,044	3,121	3,275	4,508	3,999	4,776	4,822	5,004	5,400	
Indiana	1,959	2,036	2,015	2,062	2,032	2,140	4,134	4,373	4,419	4,535	4,422	4,680	2,667	2,763	2,763	2,832	2,786	2,955	5,808	5,793	6,160	6,023	5,963	6,190	
Kutztown	1,972	2,136	2,017	2,056	2,081	2,111	4,250	4,473	4,508	4,566	4,616	4,782	2,747	2,937	2,876	2,910	2,951	3,008	4,210	4,219	4,302	4,096	4,129	4,096	
Lock Haven	2,131	2,335	2,320	2,049	2,144	2,349	4,054	4,238	3,915	4,638	3,762	4,136	2,719	2,924	2,814	2,847	2,681	2,873	5,611	13,512	6,311	2,496	3,228	4,095	
Mansfield	2,164	2,243	2,235	2,170	2,520	2,632	4,940	5,153	5,004	4,717	5,011	4,781	3,222	3,385	3,338	3,158	3,490	3,474	4,148	4,610	4,508	4,005	3,637	4,015	
Millersville	2,554	2,591	2,695	2,776	2,841	2,907	3,548	3,732	3,633	3,661	3,766	4,161	2,912	3,010	3,036	3,103	3,175	3,355	3,545	3,272	2,947	2,853	3,138	2,684	
Shippensburg	2,277	2,358	2,353	2,263	2,290	2,333	4,076	4,305	3,937	3,984	3,788	3,888	2,788	2,899	2,784	2,758	2,738	2,791	3,929	3,759	3,956	3,759	3,817	4,328	
Slippery Rock ²	2,385	2,380	2,478	2,482	2,499	2,462	3,987	4,120	4,199	4,359	4,418	4,282	2,854	2,897	2,998	3,044	3,068	2,999	2,973	3,244	3,341	4,746	4,653	4,933	
West Chester	2,315	2,426	2,349	2,291	2,314	2,322	3,551	3,741	3,660	3,872	3,864	3,844	2,756	2,885	2,793	2,799	2,808	2,820	4,099	4,228	4,128	4,119	4,260	4,528	
Total ³	2,225	2,321	2,290	2,289	2,310	2,375	3,992	4,218	4,139	4,241	4,207	4,356	2,794	2,922	2,879	2,907	2,914	3,006	3,952	3,956	4,074	4,039	4,156	4,195	
All universities ³	1,872	1,917	1,906	1,936	1,960	2,045	3,204	3,325	3,337	3,411	3,424	3,553	2,349	2,409	2,403	2,459	2,488	2,595	4,045	4,198	4,270	4,370	4,415	4,521	

1. The average instructional faculty salary cost per full-time equivalent student for each level is calculated as follows: the instructional salary for each rank is assigned by level according to the percentage distribution of the courses (assigned) credits within each rank. The salary for each rank is summed by level and divided by total full-time equivalent students for that level. For individual instruction, one course (assigned) credit is attributed to every three student credit hours generated.

2. The master's level includes the doctor's level prior to 1997-98.

3. No data for Cheyney University for 1998-99.

nd. No data.

SOURCE: Data provided by the individual universities, 1995 to 2000.

Historical Table 7

AVERAGE INSTRUCTIONAL FACULTY SALARY COST PER STUDENT CREDIT HOUR BY ACADEMIC DIVISION AND LEVEL¹
1994-95 to 1999-00

University	Lower division						Upper division						Total undergraduate						Masters						
	1994-95	1995-96	1996-97	1997-98	1998-99	1999-00	1994-95	1995-96	1996-97	1997-98	1998-99	1999-00	1994-95	1995-96	1996-97	1997-98	1998-99	1999-00	1994-95	1995-96	1996-97	1997-98	1998-99		
State-related																									
Lincoln	\$68	\$64	\$59	\$59	\$70	\$71	\$109	\$119	\$129	\$125	\$113	\$113	\$79	\$77	\$74	\$74	\$80	\$83	\$80	\$79	\$77	\$74	\$76	\$74	
Penn State	50	48	49	51	53	59	87	90	91	94	98	102	63	63	63	66	70	76	173	176	189	210	204	220	
Pittsburgh	52	57	56	57	54	53	101	99	104	112	104	107	69	71	72	75	70	70	199	217	214	220	218	222	
Temple	55	58	64	65	67	67	82	84	87	87	92	97	69	72	76	77	81	83	133	141	139	137	153	157	
Total	51	52	52	54	55	58	88	90	93	95	98	102	66	66	67	70	72	76	171	181	182	190	190	197	
State-owned																									
Bloomsburg	75	77	74	74	76	79	125	136	137	141	139	142	91	95	92	93	94	98	157	169	176	195	178	188	
California	68	75	74	74	73	75	116	129	119	121	133	129	83	90	90	89	92	92	143	140	151	138	160	174	
Cheyney	107	112	113	122	nd	143	172	199	176	206	nd	208	126	135	131	146	nd	160	121	126	138	111	nd	86	
Clarion	77	78	76	75	80	74	154	159	159	159	162	160	100	102	99	99	102	98	223	204	208	229	224	205	
East Stroudsburg	75	81	75	77	78	79	132	144	141	132	140	142	92	98	94	93	97	98	110	128	115	114	108	124	
Edinboro	76	78	79	82	85	85	133	137	133	139	140	155	94	98	97	101	104	109	188	167	199	201	209	225	
Indiana	65	68	67	69	68	71	138	146	147	151	147	156	89	92	92	94	93	99	242	241	257	251	248	258	
Kutztown	66	71	67	69	69	70	142	149	150	152	154	159	92	98	96	97	98	100	175	176	179	171	172	171	
Lock Haven	71	78	77	68	71	78	135	141	130	155	125	138	91	97	94	95	89	96	234	563	263	104	135	171	
Mansfield	72	75	74	72	84	88	165	172	167	157	167	159	107	113	111	105	116	116	173	192	188	167	152	167	
Millersville	85	86	90	93	95	97	118	124	121	122	126	139	97	100	101	103	106	112	148	136	123	119	131	112	
Shippensburg	76	79	78	75	76	78	136	143	131	133	126	130	93	97	93	92	91	93	164	157	165	157	159	180	
Slippery Rock ²	80	79	83	83	83	82	133	137	140	145	147	143	95	97	100	101	102	100	124	135	139	198	194	206	
West Chester	77	81	78	76	77	77	118	125	122	129	129	128	92	96	93	93	94	94	171	176	172	172	178	189	
Total ³	74	77	76	76	77	79	133	141	138	141	140	145	93	97	96	97	97	100	165	165	170	168	173	175	
All universities ³	62	64	64	65	65	68	107	111	111	114	114	118	78	80	80	82	83	87	169	175	178	182	184	188	

1. The average instructional faculty salary cost per student credit hour for each level is calculated as follows: the instructional salary for each rank is assigned by level according to the percentage distribution of the course (assigned) credits within each rank. The salary for each rank is summed by level and divided by the total student credit-hour production for that level. For individual instruction, one course (assigned) credit is attributed to every three student credit hours generated. Instructional faculty salary cost per student credit hour equals instructional faculty salary cost per FTE student divided by 30 for undergraduate students, and divided by 24 for graduate students (see Historical Table 6).

2. The master's level includes the doctor's level prior to 1997-98.

3. No data for Cheyney University for 1998-99.

nd. No data.

SOURCE: Data provided by the individual universities, 1995 to 2000.

Historical Table 8

AVERAGE CLASS SIZES IN CLASSROOM INSTRUCTION BY ACADEMIC DIVISION AND LEVEL¹
1994-95 to 1999-00

University	Lower division						Upper division						Total undergraduate					Masters						
	1994-95	1995-96	1996-97	1997-98	1998-99	1999-00	1994-95	1995-96	1996-97	1997-98	1998-99	1999-00	1994-95	1995-96	1996-97	1997-98	1998-99	1999-00	1994-95	1995-96	1996-97	1997-98	1998-99	
State-related																								
Lincoln	20	21	23	22	20	20	13	13	12	12	13	13	18	18	19	19	18	18	14	15	15	15	14	14
Penn State	30	31	30	31	31	29	26	26	26	27	27	27	29	29	29	29	29	28	14	14	14	14	15	14
Pittsburgh	29	29	29	30	31	31	24	24	23	22	23	23	27	27	27	27	28	28	18	17	18	18	17	17
Temple	26	28	26	26	25	26	22	23	22	22	22	22	24	25	24	24	24	23	15	15	15	14	14	14
Total	29	30	29	29	30	29	24	24	24	24	25	25	27	27	27	27	28	27	16	16	16	16	15	15
State-owned																								
Bloomsburg ²	23	23	23	24	27	27	16	15	15	15	19	19	20	20	20	20	24	24	11	11	11	9	12	12
California	31	29	30	29	29	29	18	17	17	17	16	17	25	24	24	24	23	24	14	14	13	14	12	11
Cheyney	19	19	18	17	nd	19	12	11	11	11	nd	12	16	16	15	15	nd	17	15	14	12	16	nd	19
Clarion	32	33	33	33	33	34	15	15	15	14	15	15	24	24	25	24	25	25	11	12	11	10	11	11
East Stroudsburg	28	28	29	29	28	28	18	19	18	19	18	18	24	25	24	25	24	24	19	17	16	16	17	16
Edinboro	26	26	25	25	24	26	17	17	17	17	17	18	22	23	22	22	21	23	10	10	9	9	9	9
Indiana	29	29	28	28	29	28	15	14	14	13	13	14	22	22	21	21	21	21	10	10	8	8	8	8
Kutztown	29	28	30	29	29	30	15	15	15	16	16	15	22	22	23	22	22	23	12	13	13	13	14	14
Lock Haven	28	28	30	30	29	29	17	20	22	18	21	18	24	25	27	25	26	25	15	a	8	9	12	14
Mansfield ²	26	26	26	26	28	26	8	9	8	9	17	17	14	15	14	15	23	22	8	8	7	8	12	14
Millersville	25	26	25	25	25	25	19	19	20	20	20	19	23	23	23	23	23	23	13	14	16	17	15	18
Shippensburg	28	28	28	29	29	29	17	16	20	21	22	21	23	23	25	26	27	26	14	15	15	14	14	13
Slippery Rock ³	30	31	31	31	31	31	16	16	16	16	15	16	24	24	24	24	24	25	18	16	12	12	13	11
West Chester	23	24	24	24	24	25	14	14	14	14	14	15	19	19	20	20	20	20	10	11	11	11	11	11
Total ⁴	27	27	27	27	28	28	15	15	15	15	16	16	22	22	22	22	23	23	12	12	12	12	12	12
All universities ⁴	28	28	28	28	29	28	20	19	19	19	20	20	24	24	24	24	25	25	14	14	14	14	14	14

1. Average class size for each level is calculated by dividing total classroom student credit hours by total classroom course (assigned) credits.

2. Adjustments made to classroom course (assigned) credits in 1998-99.

3. The master's level includes the doctor's level prior to 1996-97.

4. No data for Cheyney University for 1998-99.

a. No classroom instruction.

nd. No data.

SOURCE: Data provided by the individual universities, 1995 to 2000.

Historical Table 9

COMMONWEALTH INSTRUCTIONAL APPROPRIATIONS¹
1994-95 to 1999-00
(in millions)

University	1994-95	1995-96	1996-97	1997-98 ^a	1998-99	1999-00
State-related						
Lincoln	\$9.6	\$9.7	\$9.8	\$10.0	\$11.0	\$11.4
Penn State	207.6	214.7	214.7	219.0	229.0	236.2
Pittsburgh	127.6	130.9	132.2	134.9	140.8	149.5
Temple	134.5	137.3	139.0	141.8	147.9	152.3
Total	479.3	492.6	495.7	505.7	528.7	549.4
State-owned						
Bloomsburg	29.6	29.9	29.8	30.5	31.7	32.6
California	25.4	27.6	27.5	27.9	29.0	29.8
Cheyney	12.7	12.9	13.0	13.2	13.8	14.6
Clarion	26.8	28.5	28.3	28.7	29.9	30.8
East Stroudsburg	21.4	20.3	20.3	21.1	23.0	23.9
Edinboro	27.6	28.8	28.9	29.7	31.3	31.9
Indiana	53.7	56.8	56.5	57.2	58.7	58.8
Kutztown	28.3	28.9	28.7	29.3	30.5	31.5
Lock Haven	16.1	16.8	16.8	17.5	18.9	20.0
Mansfield	15.6	15.9	16.1	16.6	17.7	18.6
Millersville	29.8	31.1	30.9	31.3	32.4	32.8
Shippensburg	25.9	26.7	26.6	27.3	29.0	30.8
Slippery Rock	29.6	30.8	30.7	31.5	32.5	32.9
West Chester	40.9	38.8	38.6	39.1	40.5	43.8
Total²	383.4	393.8	392.7	400.9	418.9	432.8
All universities²	862.7	886.4	888.4	906.6	947.6	982.2

1. Instructional appropriations include educational and general appropriations and for 1994-95 and 1995-96, Tuition Challenge Grants. Excludes medical school data.

2. Excludes amount of instructional appropriation allocated to Office of the Chancellor and the System Reserve of the State System of Higher Education.

a. Excludes funding for Special Projects.

SOURCE: *Governor's Executive Budget*, 1996-97 to 2000-01; data provided by the individual State-related universities and the State System of Higher Education, Commonwealth of Pennsylvania, 1995 to 2000.

Historical Table 10

ACADEMIC YEAR TUITION AND REQUIRED FEES FOR FULL-TIME STUDENTS
BY ACADEMIC LEVEL AND RESIDENCE
1994-95 to 1999-00

University	Undergraduate		Graduate ¹	
	In-State	Out-of-State	In-State	Out-of-State
State-related				
Lincoln				
1994-95	\$3,495	\$5,618	\$4,893	\$7,633
1995-96	3,956	6,144	5,289	8,499
1996-97	4,180	6,490	5,580	8,940
1997-98	4,392	6,910	5,576	9,188
1998-99	4,595	7,210	5,830	9,580
1999-00	4,824	7,716	6,122	10,280
Penn State				
Main Campus				
1994-95	5,036	10,724	5,624	11,396
1995-96	5,258	11,310	5,872	12,018
1996-97	5,624	11,964	6,268	12,706
1997-98	5,832	12,406	6,502	13,180
1998-99	6,092	12,908	6,786	13,712
1999-00	6,436	13,552	7,160	14,392
Pittsburgh				
Main Campus				
1994-95	5,416	11,240	7,150	14,172
1995-96	5,638	11,724	7,454	14,792
1996-97	5,870	12,230	7,770	15,440
1997-98	6,164	12,928	8,154	16,318
1998-99	6,424	13,458	8,498	16,988
1999-00	6,698	14,014	8,818	17,648
Temple				
1994-95	5,464	10,246	6,342	8,934
1995-96	5,514	10,296	6,656	9,368
1996-97	5,828	10,712	7,088	9,800
1997-98	6,150	11,032	7,672	10,576
1998-99	6,378	11,408	8,032	10,936
1999-00	6,612	11,730	8,320	11,344
State-owned				
Bloomsburg				
1994-95	3,694	8,452	3,574	6,032
1995-96	3,915	8,889	3,783	6,353
1996-97	4,162	9,360	4,020	6,706
1997-98	4,278	9,634	4,133	6,901
1998-99	4,278	9,634	4,133	6,901
1999-00	4,456	9,884	4,466	7,296
California				
1994-95	3,902	8,660	3,804	6,262
1995-96	4,136	9,110	4,038	6,608
1996-97	4,304	9,502	4,206	6,892
1997-98	4,475	9,831	4,377	7,145
1998-99	4,545	9,901	4,441	7,209
1999-00	4,742	10,170	4,794	7,624
Cheyney				
1994-95	3,591	8,349	3,411	5,869
1995-96	3,729	8,703	3,604	6,174
1996-97	3,922	9,120	3,748	6,434
1997-98	4,023	9,379	3,850	6,618
1998-99	4,023	9,379	3,850	6,618
1999-00	4,173	9,601	4,160	6,990
Clarion				
1994-95	3,879	8,637	3,799	6,257
1995-96	4,054	9,028	3,970	6,540
1996-97	4,268	9,466	4,144	6,830
1997-98	4,378	9,734	4,278	7,046
1998-99	4,569	8,905	4,469	7,237
1999-00	4,700	6,510	4,762	7,592
East Stroudsburg				
1994-95	3,844	8,602	3,690	6,148
1995-96	4,016	8,990	3,862	6,432
1996-97	4,195	9,393	4,041	6,727
1997-98	4,322	9,678	4,166	6,934
1998-99	4,314	9,670	4,168	6,936
1999-00	4,492	9,920	4,504	7,334

Edinboro				
1994-95	3,685	8,443	3,685	6,143
1995-96	3,924	8,898	3,924	6,694
1996-97	4,083	9,281	4,081	6,763
1997-98	4,193	9,549	4,366	7,134
1998-99	4,193	10,084	4,366	7,549
1999-00	4,358	6,168	4,725	7,555
Indiana				
1994-95	3,725	8,483	3,620	6,078
1995-96	3,891	8,865	3,787	6,357
1996-97	4,064	9,262	3,956	6,642
1997-98	4,204	9,560	4,093	6,861
1998-99	4,244	9,600	4,133	6,901
1999-00	4,419	9,847	4,447	7,277
Kutztown				
1994-95	3,699	8,535	3,569	6,105
1995-96	3,940	8,914	3,810	6,380
1996-97	4,138	9,336	3,968	6,654
1997-98	4,219	9,575	4,089	6,857
1998-99	4,251	9,607	4,111	6,879
1999-00	4,448	9,876	4,480	7,310
Lock Haven				
1994-95	3,662	8,896	3,662	6,366
1995-96	3,822	8,796	3,822	6,392
1996-97	3,988	9,186	3,988	6,674
1997-98	4,062	9,418	4,062	6,830
1998-99	4,071	7,427	4,071	6,939
1999-00	4,259	7,687	4,434	7,264
Mansfield				
1994-95	3,624	8,382	3,464	5,922
1995-96	3,804	8,778	3,624	6,194
1996-97	4,034	9,232	3,834	6,520
1997-98	4,354	9,710	3,944	6,712
1998-99	4,410	9,766	4,010	6,778
1999-00	4,560	9,988	4,322	7,152
Millersville				
1994-95	3,920	8,678	3,920	6,378
1995-96	4,100	9,074	4,100	6,670
1996-97	4,268	9,466	4,268	6,954
1997-98	4,400	9,756	4,400	7,168
1998-99	4,429	9,785	4,429	7,197
1999-00	4,595	10,023	4,757	7,587
Shippensburg				
1994-95	3,856	8,614	3,696	6,154
1995-96	4,010	8,984	3,850	6,420
1996-97	4,230	9,428	4,030	6,716
1997-98	4,344	9,700	4,144	6,912
1998-99	4,344	9,700	4,144	6,912
1999-00	4,550	9,978	4,472	7,302
Slippery Rock				
1994-95	3,836	8,594	3,836	6,294
1995-96	4,013	8,987	4,013	6,583
1996-97	4,179	9,377	4,179	6,748
1997-98	4,302	9,658	4,475	7,243
1998-99	4,311	9,667	4,485	7,667
1999-00	4,484	9,912	4,851	7,681
West Chester				
1994-95	3,646	8,404	3,528	5,986
1995-96	3,874	8,848	3,756	6,326
1996-97	4,032	9,230	3,914	6,600
1997-98	4,162	9,518	4,044	6,812
1998-99	4,248	9,604	4,128	6,896
1999-00	4,422	9,850	4,464	7,294

1. Excludes first-professional level.

SOURCE: Pennsylvania Department of Education, *Colleges and Universities-Basic Student Charges*, 1994-95 and 1995-96; Pennsylvania Department of Education, *Colleges and Universities-Education Digest*, 1996-97 to 1999-00.

page 40 blank

APPENDIX: MODEL OF FTE SALARY COST DETERMINATION

Instructional faculty salary cost per student credit hour, for each academic level and each program area, can be expressed by the following model:

$$\begin{array}{r}
 \text{FTE} \\
 \text{Instructional} \\
 \text{faculty} \\
 \hline
 \text{salaries} \\
 \text{Student} \\
 \text{credit hours}
 \end{array}
 =
 \begin{array}{r}
 \text{Number of FTE} \\
 \text{instructional faculty} \\
 \hline
 \text{Number} \quad \text{Average} \\
 \text{of} \quad \text{x} \quad \text{course} \\
 \text{courses} \quad \text{(assigned)} \\
 \text{credit} \\
 \text{value}
 \end{array}
 \times
 \begin{array}{r}
 \text{Average FTE instructional} \\
 \text{faculty salary} \\
 \hline
 \text{Average} \quad \text{Number} \\
 \text{class} \quad \text{x} \quad \text{of classes} \\
 \text{(section)} \quad \text{(sections)} \\
 \text{size} \quad \text{Number} \\
 \text{of courses}
 \end{array}$$

The two terms on the right-hand side of this equation illustrate the two different kinds of factors which determine FTE instructional salary cost.

The components of the first term are approximately *constants or constant relationships*. In the short run, neither the number of faculty per course nor the number of faculty per average course (assigned) credit value can be readily varied to influence FTE instructional salary cost.

The second term contains *control variables*: average FTE instructional faculty salary, average class (section) size, and the number of classes (sections) per course. To at least some degree, each of these variables can be controlled by university administrators to affect FTE instructional salary cost. Adjustments in the number of classes (sections) per course are an alternative to permitting average class sizes to change with changes in enrollment.

Average instructional faculty salary cost per FTE student, or FTE instructional salary cost, equals the FTE instructional salary cost per student credit hour times 30 for undergraduate students, and times 24 for graduate students.

This model serves as the basis for the regression analysis performed by the Commission staff to estimate the annual cost savings from a decrease in average salary and an increase in average class (section) size (see chart, page xiii).